



# NATURAL GAS SERVICE LINE & METER INSTALLATION APPLICATION



## CONSTRUCTION CHARGES - Applicable year round

**Excess Service Line Footage - \$4.00 per foot**  
 NOTE: \$4 per foot will be charged for footage over 75 feet for service to a residence where a natural gas furnace or boiler is the primary source of heat. Service to any other structure will require a quote.  
**Directional Boring (If necessary) Per Inspector's Quote**

## EXTRAORDINARY CHARGES - As necessary per ground conditions

**Long Side Directional Boring - \$400 per hour** (average 10 hours)  
**VAC Truck** (gas main under pavement) - **\$330 per hour**  
 These charges are current as of February 2023 and may change in accordance with CenterPoint Energy's contract rates.

## METER PROTECTION CHARGES - If required

**Guard Posts installed during the Construction Season**  
 1 Post = \$287      2 Posts = \$574      3 Posts = \$663  
 4 Posts = \$576      5 Posts = \$690      6 Posts = \$828  
 7 or more posts = \$138 each additional  
**Guard Posts Installed Out-of-Season See Out-of-Season Construction Charges**

## NATURAL GAS METER REQUIREMENTS (May vary by city)

- Regulator and relief valve must be located where gas can escape freely away from any opening into the building or any source of ignition. A 3' clear zone is required from:
    - Fresh air intakes, exhaust vents or water spigots
    - Doors, operable windows or overhead garage doors
    - Electric meter, water meter, subpanels or breakers
    - Air conditioner or heat pump units, shut-offs or breakers
    - Exterior lights, outlets, internet, telephone or cable circuits
    - Outdoor grills or fire pits
  - Avoid locations directly below roof valleys, downspouts, decks, stairs or partial overhangs to prevent damage from falling ice.
  - Meter should be located away from potential damage to vehicles. Meters exposed to potential damage will require meter protection at an additional charge. See Meter Protection Charges above for details.
  - Banked meters are preferable for townhouse buildings, whenever possible.
- NOTE:** The customer will be responsible for all costs to relocate the gas meter if the customer does not adhere to the minimum clearance requirements or there is a request to relocate the meter after the initial installation.

## NATURAL GAS SERVICE LINE REQUIREMENTS

- Minimum of 3' from property line (unless easement exists)
- Minimum of 6' from building structure, if service line will be parallel to it
- Minimum of 8' from buried fuel tanks (varies by municipality)
- Minimum of 10' from wells and septic tanks
- Installed in a straight line perpendicular to gas main when possible

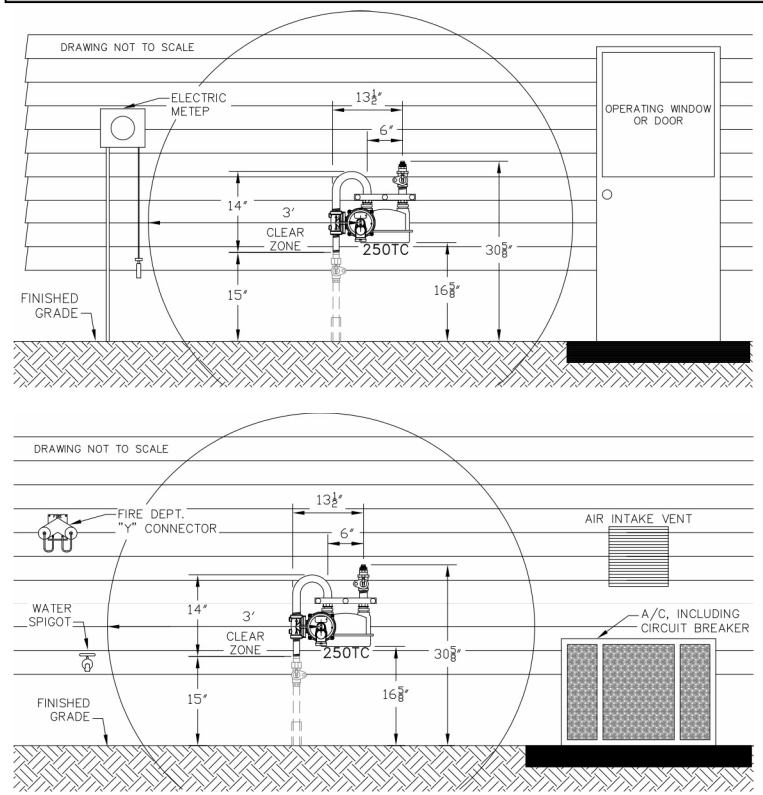
## CONTACT INFORMATION

**Work Order Management/MN Meter & Service Request**  
**Hotline: 800-342-4166 or 612-342-5123**  
**Fax: 800-365-9188 or 612-321-5573**  
**Construction Services**  
**Scheduling & Site Readiness Hotline: 612-321-5310**  
**Website: CenterPointEnergy.com**  
**E-mail: WOM@CenterPointEnergy.com**  
**Mail: Work Order Management**  
**CenterPoint Energy**  
**P.O. Box 1165**  
**Minneapolis, MN 55440-1165**  
**NOTE:** Processing time is 4-6 weeks from receipt of application.

## OUT-OF-SEASON CONSTRUCTION CHARGES\*

**When winter conditions exist between DECEMBER 1 and APRIL 1**  
 After November 1, installations requiring a road crossing may be unavailable due to municipality restrictions or weather conditions.  
**Frost Burner Charges \$272 per burner per day**  
 Note: Typically two burners are needed for three to six days. Site conditions may require additional usage.  
**Service Footage Charges \$4.00 per foot for entire service length**  
 \*Out-of-season construction charges are in addition to construction charges.  
 \*Out-of-season construction charges will not apply if the following conditions are met:  
 - A completed, signed application is received by **OCTOBER 15**  
 - The property meets site-ready requirements by **NOVEMBER 1**

## MINIMUM CLEARANCES FOR GAS METER INSTALLATION



## INSTALLATION SITE-READINESS REQUIREMENTS

- Site must be graded to within 6" of final grade
  - Basement / Foundation in and backfilled
  - Clear 8' wide path from the gas main to meter location
  - All exterior walls must be framed
  - All roof trusses must be set
  - Site Ready picture of structure
  - Clearly mark / stake the location of all private underground utilities located on the property such as:
    - Sewer lines
    - Water lines
    - Electric lines
    - Fuel lines
    - Sump drains/extensions
    - Septic tanks/drain fields
    - Wells
    - Sprinkler systems
    - Invisible fences
- NOTE:** CenterPoint Energy and its representatives are not responsible for damage to these items if they are not clearly marked at the time of installation.