

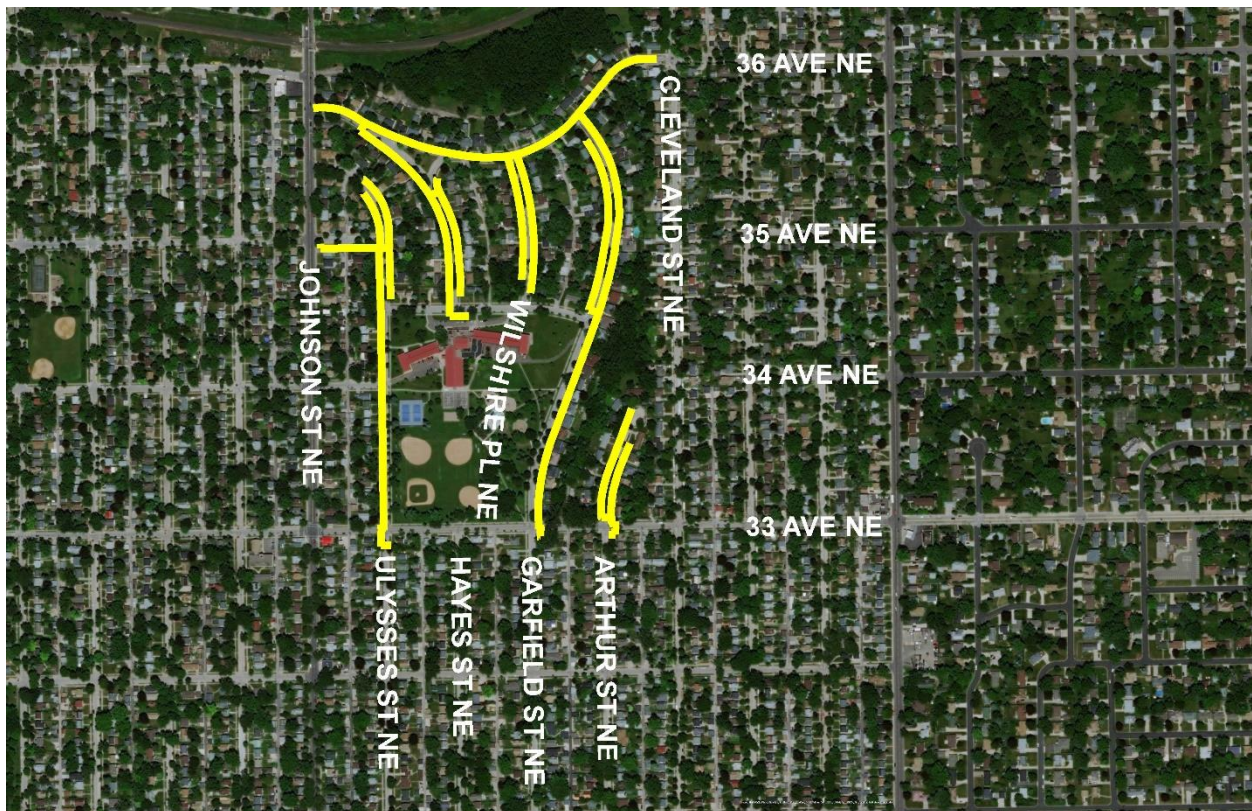


Always There.®

NOTICE: CenterPoint Energy to upgrade natural gas pipelines in your neighborhood May 30 – August 2018

*Text-to-subscribe for updates regarding this construction project by sending
CNP WAITE to 468311*

- Michels Corporation, an authorized CenterPoint Energy contractor, will be replacing the natural gas system in the Minneapolis's Waite Park Neighborhood along selected streets between 33rd Ave. NE and 36th Ave. NE, and between Johnson St. NE and Cleveland St. NE. (See the map below.)
- CenterPoint Energy's construction is expected to begin on Wednesday, May 30, and last into August 2018.
- Parking and lane restrictions are required in areas where construction activity is occurring and is necessary to keep both the public and construction personnel safe.
- **For additional information, please visit our Construction Zone website at:**
CenterPointEnergy.com/Construction.





Always There.®

NOTICE: CenterPoint Energy to upgrade natural gas pipelines in your neighborhood May 30 – August 2018

May 29, 2018

Dear Property Owner,

At CenterPoint Energy, we are committed to providing timely and relevant information to our customers and the general public to minimize inconvenience or disruption due to our construction activities.

CenterPoint Energy will begin replacing the natural gas system prior to the start of the City of Minneapolis's "[Waite Park Neighborhood Concrete Street Rehabilitation](#)" project. CenterPoint Energy's work will begin on Wednesday, May 30, and last into August 2018. Michels Corporation, an authorized CenterPoint Energy contractor, will work along the selected streets between 33rd Ave. NE and 36th Ave. NE, and between Johnson St. NE and Cleveland St. NE. (See map on opposite page.) Parking is available on the side of the street opposite from where the crews are working. Parking and lane restrictions are required in areas where construction activity is occurring and is necessary to keep both the public and construction personnel safe. Project updates, detailing progress and affected areas will be available at CenterPoint Energy's website at CenterPointEnergy.com/Construction.

Construction will happen in three phases: **Phase 1** consists of installing the natural gas distribution main. **Phase 2** is connecting the individual customer gas service lines to the new gas distribution main. This may include service line replacement and relocating gas meters from inside the home to outside. Customers will experience a short disruption of gas service as the crews are installing the gas service line. Crews may have to dig in the ground on your property in the utility easement to complete the task of service and main distribution line replacement. **Phase 3** is the restoration of disturbed areas affected by our work outside the city construction zone. This may consist of lawn restoration and sidewalk or street restoration as work dictates.

CenterPoint Energy has provided safe, clean and efficient natural gas service to Minnesota communities for more than 145 years. We are proud of this record and strive to improve it by educating the public about the benefits of natural gas at CenterPointEnergy.com/BeSafe. In addition, you can contact us directly by calling CenterPoint Energy's Information Hotline at 612-321-5369 or our Communications Specialist, Hannah Gullickson, at 612-321-5546. **Please reference the Waite Park Concrete Rehabilitation construction project or number 84994724 when calling the Information Hotline.** We appreciate your business and look forward to continuing to serve you.

CenterPoint Energy