

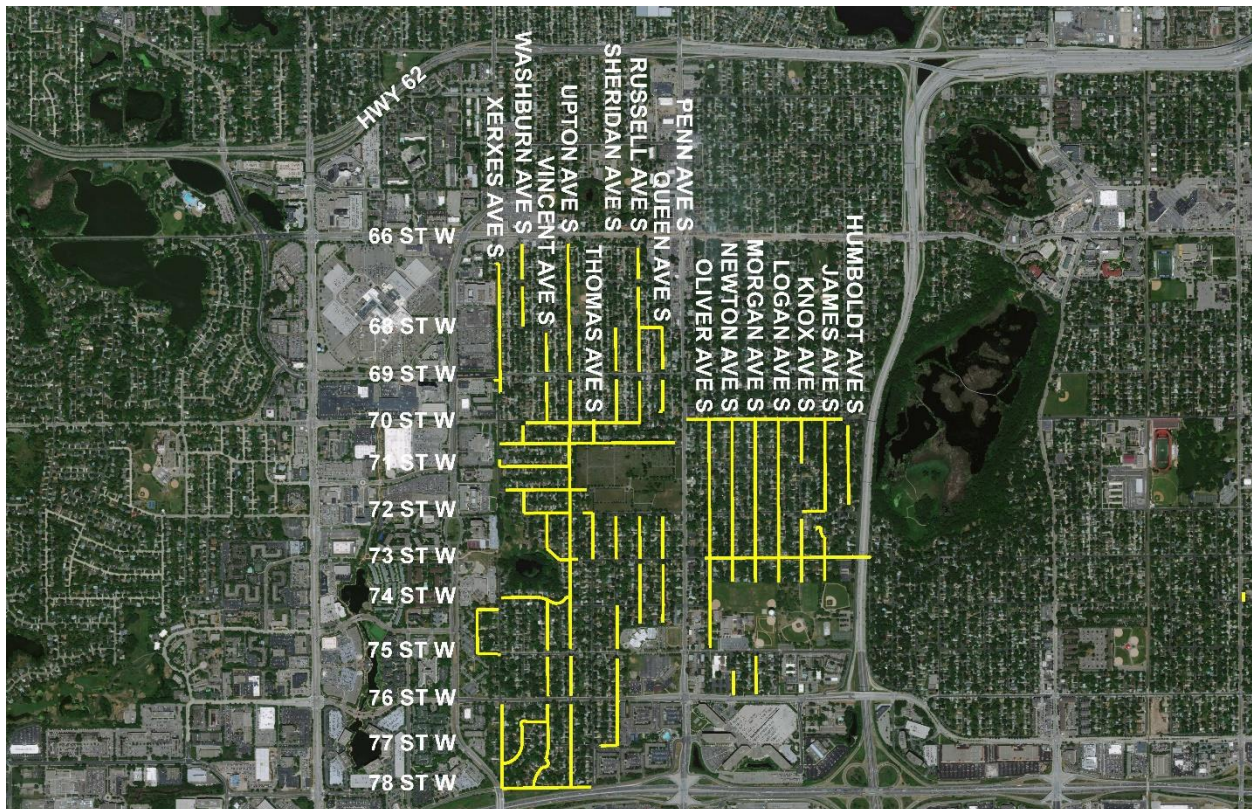


Always There.®

NOTICE: CenterPoint Energy to upgrade natural gas pipelines in your neighborhood August 6 – late Fall 2018

*Text-to-subscribe for updates regarding this construction project by sending **CNP 2018RICHFIELD to 468311***

- Michels Corporation, an authorized CenterPoint Energy contractor, will begin the natural gas system replacement in the Richfield neighborhood along selected streets between W. 66th Street and W. 78th Street, and between Xerxes Avenue S. and Humboldt Avenue S.
- CenterPoint Energy’s construction is expected to begin in the week of August 6, 2018, and end in late Fall 2018.
- Construction will take place in the areas highlighted below. Lane restrictions are anticipated in areas where active construction is occurring. The lane restrictions are necessary to keep both the public and construction personnel safe.
- **For additional information, please visit our Construction Zone website at: CenterPointEnergy.com/Construction.**





Always There.®

NOTICE: CenterPoint Energy to upgrade natural gas pipelines in your neighborhood August 6 – late Fall 2018

August 3, 2018

Dear Property Owner,

At CenterPoint Energy, we are committed to providing timely and relevant information to our customers and the general public to minimize inconvenience or disruption due to our construction activities.

CenterPoint Energy will be replacing the natural gas system in coordination with the City of Richfield's "[Accelerated Mill and Overlay Program](#)" project. CenterPoint Energy's project construction is expected to begin in the week of August 6, 2018, and end in late Fall 2018. The affected areas are featured on the reverse side of the page. Michels Corporation, an authorized CenterPoint Energy contractor, is anticipated to replace the existing natural gas mains along selected streets between W. 66th Street and W. 78th Street, and between Xerxes Avenue S. and Humboldt Avenue S. Parking and lane restrictions are required in areas where construction activity is occurring and is necessary to keep both the public and construction personnel safe. Project updates, detailing progress and affected areas will be available at CenterPoint Energy's website at CenterPointEnergy.com/Construction.

Construction will happen in three phases: **Phase 1** consists of installing the natural gas distribution main. **Phase 2** is connecting the individual customer gas service lines to the new gas distribution main. This may include service line replacement and relocating gas meters from inside the home to outside. Customers will experience a short disruption of gas service as the crews are installing the gas service line. Crews may have to dig in the ground on your property in the utility easement to complete the task of service and main distribution line replacement. **We will be sending a letter explaining the process approximately one to two weeks prior to your service line and gas meter replacement, in addition to a yellow door tag with CNP's logo approximately one or two weeks prior to the replacement.** **Phase 3** is the restoration of disturbed areas affected by our work outside the city construction zone. This may consist of lawn restoration and sidewalk or street restoration as work dictates. To learn more about this project or to sign up for weekly construction updates, please visit our Construction Zone website at CenterPointEnergy.com/Construction.

CenterPoint Energy has provided safe, clean and efficient natural gas service to Minnesota communities for more than 145 years. We are proud of this record and strive to improve it by educating the public about the benefits of natural gas at CenterPointEnergy.com/BeSafe. In addition, you can contact us directly by calling CenterPoint Energy's Information Hotline at 612-321-5369 or our Communications Specialist, Hannah Gullickson, at 612-321-5546. **Please reference the "Richfield 2018 Reconstruction Project" project or number 85420440 when calling.** We appreciate your business and look forward to continuing to serve you.

CenterPoint Energy