



Always There.®

CenterPoint Energy to perform Crystal – 2020 Mill and Overlay Project

*Text-to-subscribe for updates regarding this construction project by sending
CNP 2020MILLOVERLAY to 468311*

Dear Property Owner,

At CenterPoint Energy, we are committed to providing timely and relevant information to our customers and the general public to minimize inconvenience or disruption due to our construction activities.

Due to coronavirus concerns, CenterPoint Energy is delaying meter work that requires entering customer homes or disrupting customer gas service until further notice.

Project Description: CenterPoint Energy's project is anticipated to last from the week of April 13 to late summer 2020 with work from CenterPoint Energy's authorized contractors. Crews from Michels Corporation will replace natural gas mains and connect natural gas service lines to the new mains. Crews from Q3 Contracting will restore the areas affected by Michels Corporation's work outside the limits of [the City of Crystal's 2020 Mill and Overlay Project](#).

Installing replacement gas mains: Michels Corporation will be installing the replacement gas main on this project. According to [the Governor of Minnesota's order](#), gas main replacement is an essential work function. This allows for the modernization of related gas facilities. The gas main work requires excavations in various locations in the right-of-way (front yard) to facilitate the installation work.

Connecting service lines to the new mains: Due to coronavirus concerns, CenterPoint Energy is delaying work that requires entering customer homes, such as moving gas meters outside. Gas service will not be interrupted. Crews will continue to replace service lines. A new service line will be replaced from the new main up to the resident's home. The meter, whether it is currently inside or outside, will not be disrupted. Crews may have to dig in the ground on your property in the utility easement and next to your home to complete the task of service line replacement. At a later date, the crews will come back to add the new meter onto the service line.

Traffic impacts: Work will occur in segments rather than all at once. For the majority of the project, the crews will maintain two-way traffic with a lane shift. For a limited time, the crews will close 34th Ave. N. between Edgewood Ave. N. and Douglas Dr. N., detouring traffic. (Local access will be maintained. The crews will notify any residents whose driveways the crews will temporarily cross.) Lane, parking and some sidewalk restrictions are anticipated in areas where active construction is occurring and are necessary to keep both the public and construction personnel safe.



Always There.®

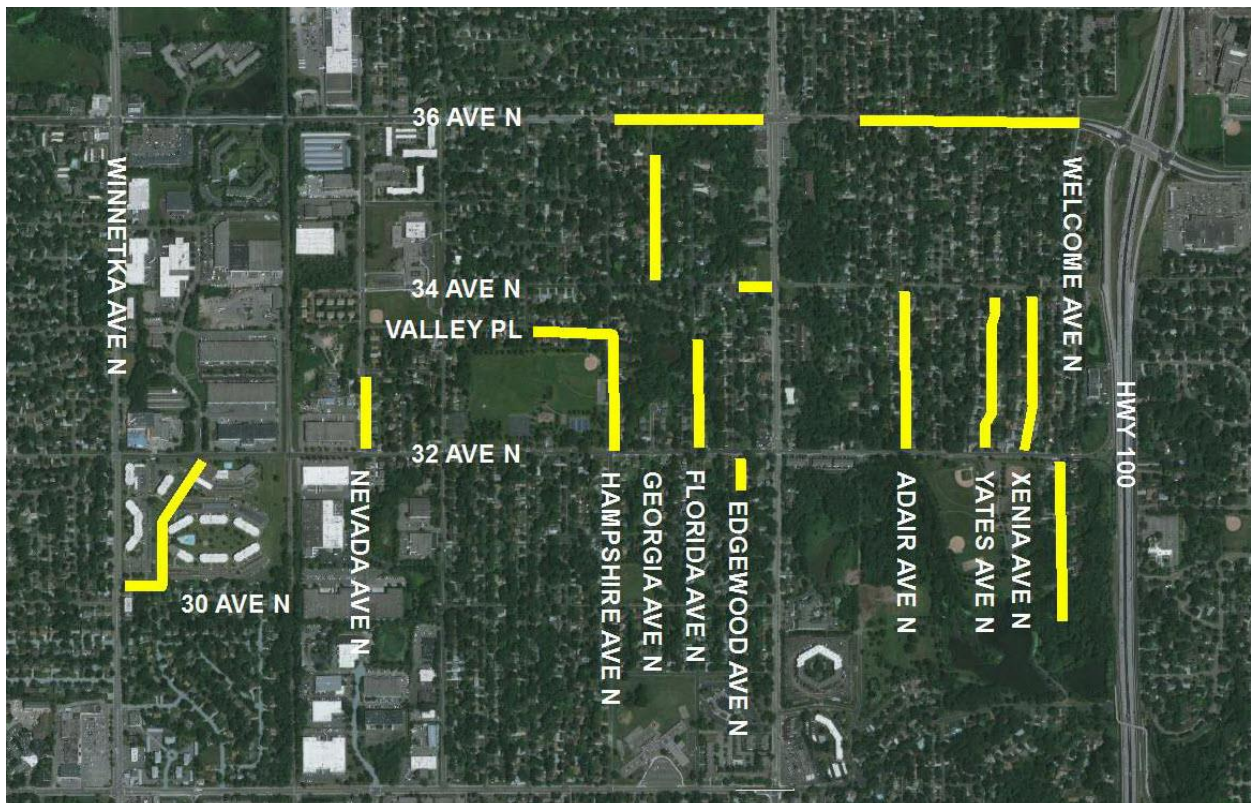
CenterPoint Energy to perform Crystal – 2020 Mill and Overlay Project

Due to coronavirus concerns, CenterPoint Energy is delaying meter work that requires entering customer homes or disrupting customer gas service until further notice.

How can I contact CenterPoint Energy? For more information or to sign up for updates, please visit CenterPoint Energy’s Construction Zone website at [CenterPointEnergy.com/Construction](https://www.centerpointenergy.com/construction). In addition, you can contact one of the following CenterPoint Energy resources. Please reference the **Crystal – 2020 Mill and Overlay Project** or the number **91773755**:

- Communications Specialist, Hannah Gullickson, at 612-321-5546
- Information Hotline at csv.constructionservices@centerpointenergy.com
- Restoration Questions at csv.restoration@centerpointenergy.com

We appreciate your patience as we continue to upgrade our natural gas system. CenterPoint Energy has provided safe, clean and efficient natural gas service to Minnesota communities for more than 145 years. We are proud of this record and strive to improve it by educating the public about the benefits of natural gas at [CenterPointEnergy.com/BeSafe](https://www.centerpointenergy.com/BeSafe). We appreciate your business and look forward to continuing to serve you.



CenterPoint Energy