

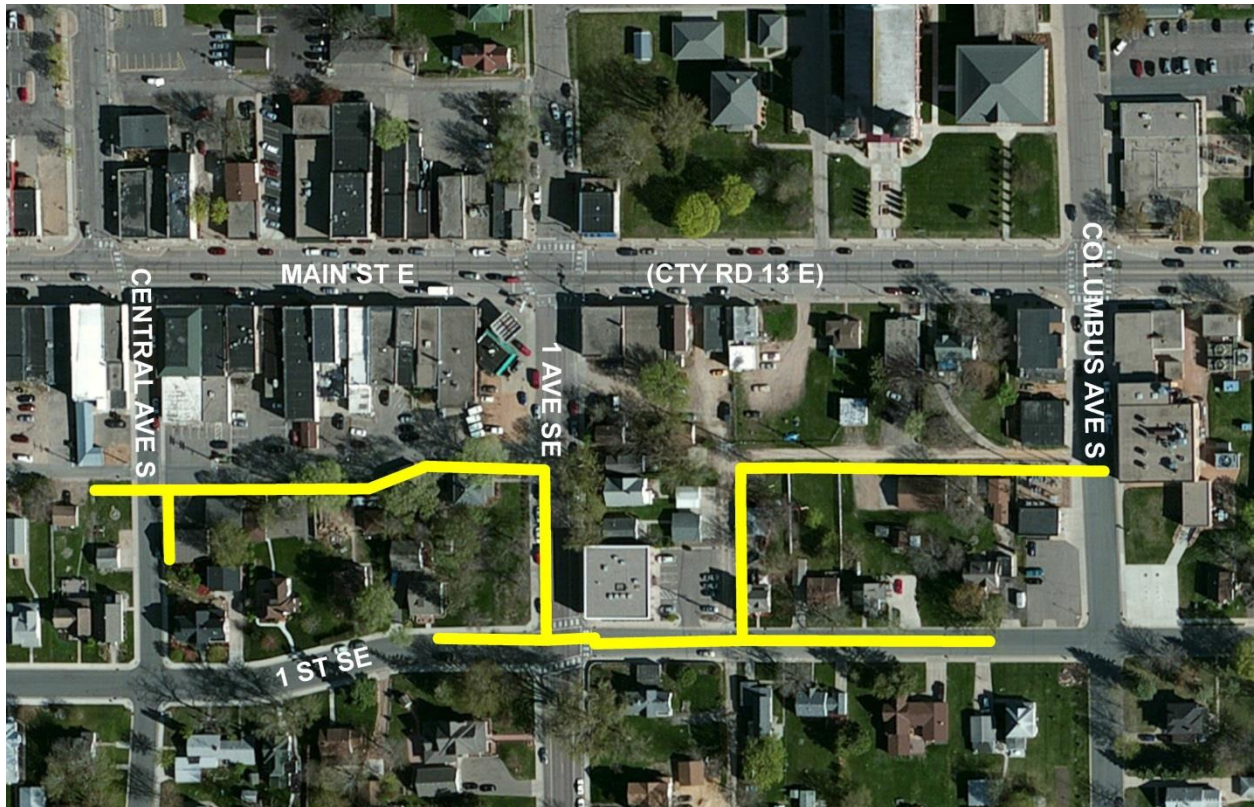


Always There.®

## REVISED LETTER: CenterPoint Energy to upgrade natural gas pipelines in your neighborhood October 9 – November 17, 2017

*Text-to-subscribe for updates regarding this construction project by sending  
**CNP MAINSTE to 468311***

- Michels Corporation, a CenterPoint Energy authorized contractor, will begin the natural gas system replacement in the New Prague neighborhood on Central Avenue S., 1<sup>st</sup> Avenue SE and Columbus Avenue S. south of Main Street E. (County Road 13 E).
- CenterPoint Energy's construction is expected to begin on October 9, 2017, and will last until November 17, 2017.
- Construction will take place in the areas highlighted below. Lane restrictions are anticipated in areas where active construction is occurring. The lane restrictions are necessary to keep both the public and construction personnel safe.
- **For additional information, please visit our Construction Zone website at:**  
[CenterPointEnergy.com/Construction](http://CenterPointEnergy.com/Construction).





Always There.®

## **REVISED LETTER: CenterPoint Energy to upgrade natural gas pipelines in your neighborhood October 9 – November 17, 2017**

October 5, 2017

Dear Property Owner,

At CenterPoint Energy, we are committed to providing timely and relevant information to our customers and the general public to minimize inconvenience or disruption due to our construction activities.

CenterPoint Energy will begin replacing the natural gas system on October 9, 2017. Project construction is expected to last until November 17, 2017, and the affected areas are featured on the reverse side of the page. Michels Corporation, an authorized CenterPoint Energy contractor, will replace the existing natural gas mains on Central Avenue S., 1<sup>st</sup> Avenue SE and Columbus Avenue S. south of Main Street E. (County Road 13 E.). Parking and lane restrictions are required in areas where construction activity is occurring and is necessary to keep both the public and construction personnel safe.

Construction will happen in three phases: **Phase 1** consists of installing the natural gas distribution main. **Phase 2** is connecting the individual customer gas service lines to the new gas distribution main. This may include service line replacement and relocating gas meters from inside the home to outside. Customers will experience a short disruption of gas service as the crews are installing the gas service line. Crews may have to dig in the ground on your property in the utility easement to complete the task of service and main distribution line replacement. **Phase 3** is the restoration of disturbed areas affected by our work outside the city construction zone. This may consist of lawn restoration and sidewalk or street restoration as work dictates. By then, traffic signs associated with CenterPoint Energy's work will be removed from the project site. Project updates, detailing progress and affected areas will be available at CenterPoint Energy's website at [CenterPointEnergy.com/Construction](http://CenterPointEnergy.com/Construction).

CenterPoint Energy has provided safe, clean and efficient natural gas service to Minnesota communities for more than 145 years. We are proud of this record and strive to improve it by educating the public about the benefits of natural gas at [CenterPointEnergy.com/BeSafe](http://CenterPointEnergy.com/BeSafe). In addition, you can contact us directly by calling CenterPoint Energy's Information Hotline at 612-321-5369 or our Communications Specialist, Hannah Gullickson, at 612-321-5546. We appreciate your business and look forward to continuing to serve you.

**CenterPoint Energy**