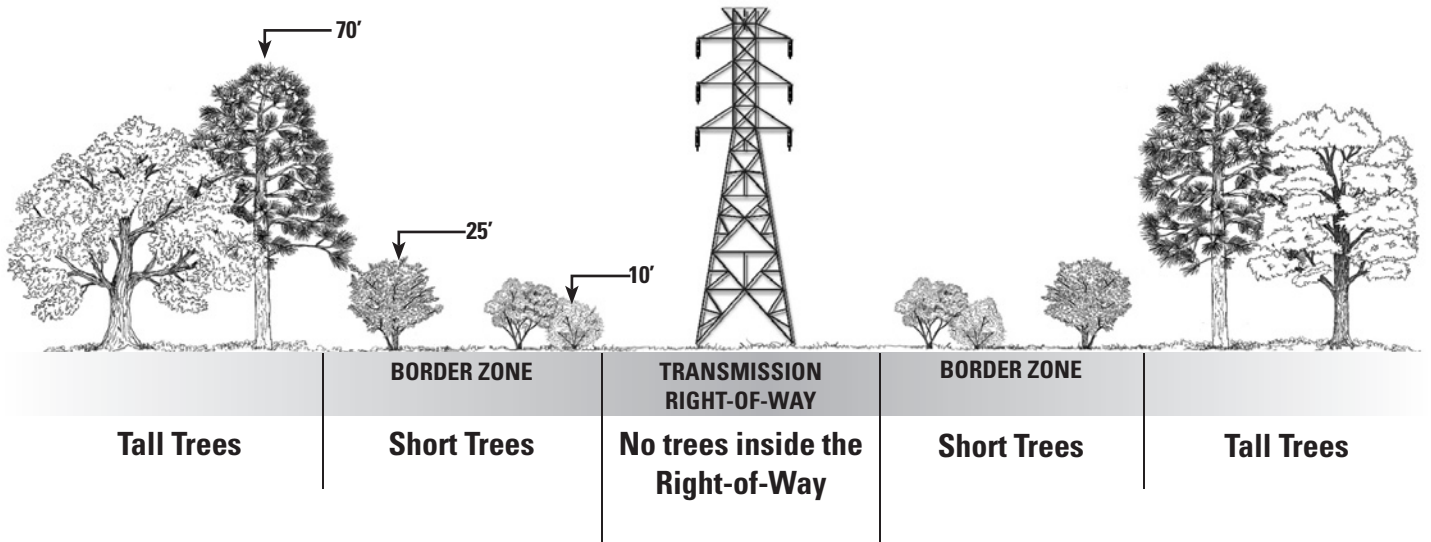


Plant the Right Tree in the Right Place

Plant trees farther away from *transmission lines* as mature tree height increases.



CenterPoint Energy's policy is to remove vegetation that will at some time interfere with the safe operation of our transmission lines. The intent is to produce a low-growing, predictable environment within our transmission line corridors, which has been recognized by the Federal Energy Regulatory Commission (FERC) as a utility model for ensuring safe and reliable operation of the transmission grid.

Tall-growing trees inside the transmission right-of-way located underneath or near transmission lines will be removed for safety and reliability. Use the guide above to place trees safe distances away from and never beneath transmission lines. For an approved list of compatible vegetation for transmission rights-of-way, please contact CenterPoint Energy at 713-207-2222 or 1-800-332-7143, and a transmission forester will be notified to assist you.

**Before you dig, call 811 to locate underground utilities.
And remember to "look up and live": stay at least 10 feet away from power lines.**



Always There.®

For more information, visit www.CenterPointEnergy.com/trees