

## **APPENDIX B**

### Public Meeting Information

This page left blank intentionally

**CenterPoint Energy to a host Public Meeting for the proposed  
138 kV Kilgore Substation Project**

CenterPoint Energy Houston Electric, LLC (CenterPoint Energy) will hold a public open house meeting at the following date and location:

**Thursday October 13, 2022**

Baytown Community Center  
2407 Market Street  
Baytown, TX 77520  
5:00 p.m. – 8:00 p.m.

The purpose of the public meeting is to discuss and share information on potential routes for a proposed 138 kilovolt (kV) electric transmission line in Chambers County known as the 138 kV Kilgore Substation project. The proposed transmission line is required to connect a new distribution substation used to support the load growth in the Baytown-Mont Belvieu area. The proposed construction includes a 138 kV double-circuit transmission line, located along a yet-to-be-determined route, connecting an existing transmission line to the new distribution substation in a yet-to-be determined location near Kilgore Parkway and Needlepoint Road.

The map illustrates the proposed Preliminary Transmission Line Segments. All of the proposed preliminary segments shown on the map are under consideration at this time; however, not all of the segments will be constructed. The Public Utility Commission of Texas will determine the final route in a proceeding to consider an Application for a Certificate of Convenience and Necessity that will be filed by CenterPoint Energy.

Information stations with representatives from CenterPoint Energy and environmental specialists from both CenterPoint Energy and Halff Associates, Inc. will be available to share information about the need for the transmission project, the type of structures proposed for the new transmission line, construction methods to be used, and transmission right-of-way requirements. A questionnaire will be provided by CenterPoint Energy for individuals to complete regarding their preferences and to provide comments. Refreshments will be provided.

For more information about the proposed project, the public meetings, and a copy of the questionnaire, please visit our website at <http://www.centerpointenergy.com/kilgoresubstation>, the website will be available on October 10; or contact the 138 kV Kilgore Substation project team at 713-207-6490 or email at [kilgoresubstation@centerpointenergy.com](mailto:kilgoresubstation@centerpointenergy.com).

---



September 29, 2022

<<Salutation>> <<FirstName>> <<LastName>>  
<<Title>>  
<<Agency\_1>>  
<<Agency\_2>>  
<<Envelope>>  
<<City>>, <<State>> <<Zip5>>

<<Dear>> <<LastName>>,

You are invited to attend a public meeting hosted by CenterPoint Energy Houston Electric, LLC ("CenterPoint Energy") to discuss and share information on potential routes for a proposed 138 kilovolt (kV) electric transmission line in Chambers County known as the 138 kV Kilgore Substation project. As a landowner near the proposed electric transmission line segments, we value your input, feedback, questions, and comments and this is an opportunity for CenterPoint Energy to visit with you one-on-one about the process and project.

The date, time and location for the public meeting is:

**Thursday October 13, 2022**  
Baytown Community Center  
2407 Market Street  
Baytown, TX 77520  
5:00 p.m. – 8:00 p.m.

The proposed transmission line is required to connect a new distribution substation used to support the load growth in the Baytown-Mont Belvieu area. The proposed construction includes a 138 kV double-circuit transmission line, located along a yet-to-be-determined route, connecting an existing transmission line to the new distribution substation in a yet-to-be determined location near Kilgore Parkway and Needlepoint Road.

All of the proposed preliminary segments displayed on the enclosed map are under consideration at this time; however, not all of the segments will be constructed. The Public Utility Commission of Texas will determine the final route in a proceeding when it considers CenterPoint Energy's filing of an Application for a Certificate of Convenience and Necessity.

Information stations with subject matter experts from CenterPoint Energy and environmental specialists from both CenterPoint Energy and a consulting and engineering firm under contract with CenterPoint Energy, Halff Associates, Inc., will be available to share information about the need for the transmission project, the type of structures proposed for the new transmission line, construction methods to be used, and transmission right-of-way requirements. CenterPoint Energy will provide a questionnaire for landowners to complete regarding their preferences and to provide comments. Refreshments will be provided.

For more information about the proposed project, the public meetings, and a copy of the questionnaire, please visit our website at <http://www.centerpointenergy.com/kilgoresubstation>, the website will be available on October 10; or contact the 138 kV Kilgore Substation project team at 713-207-6490 or email at [kilgoresubstation@centerpointenergy.com](mailto:kilgoresubstation@centerpointenergy.com).

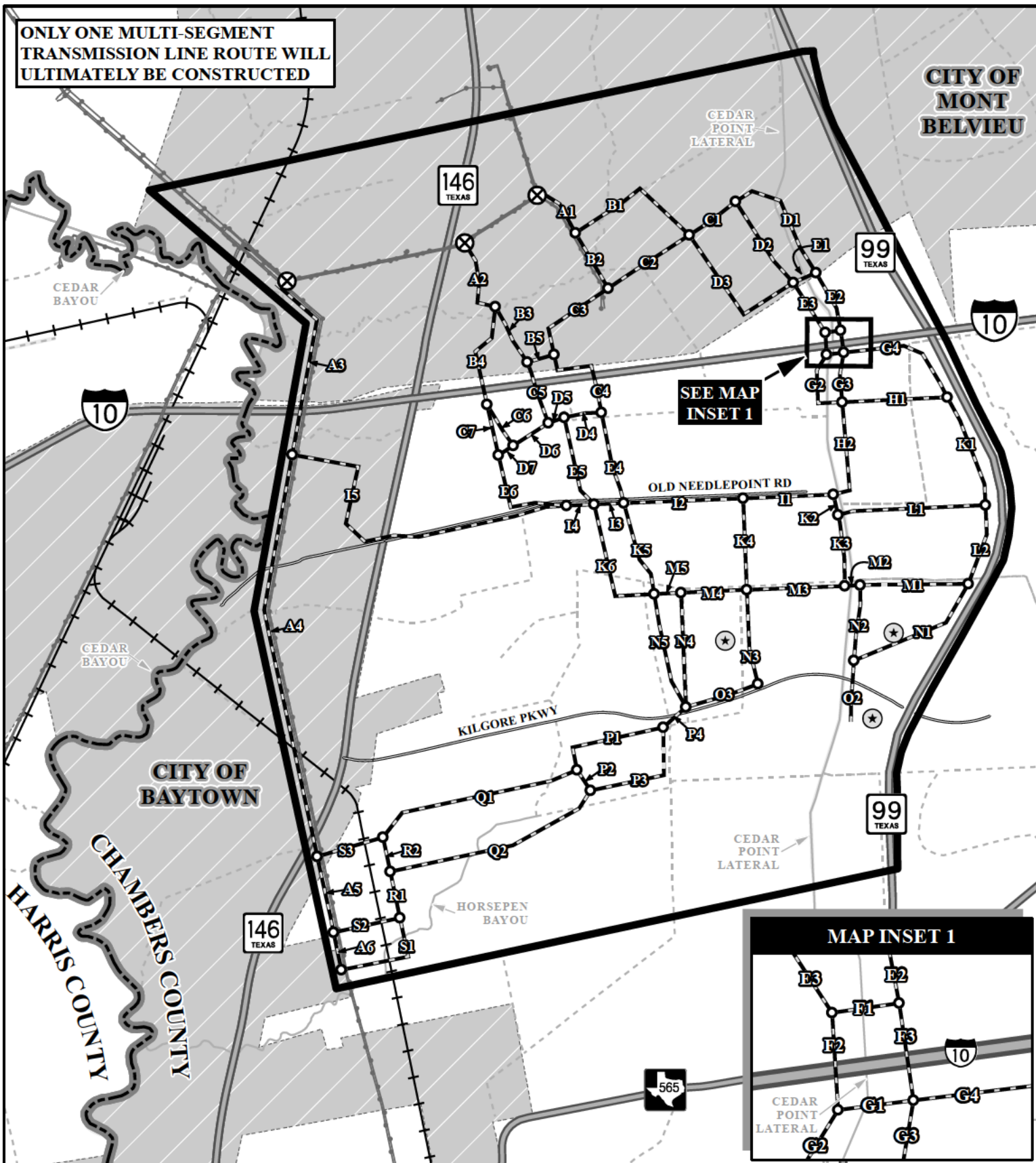
Sincerely,

Daniela Hammons  
Director; Policy and Compliance

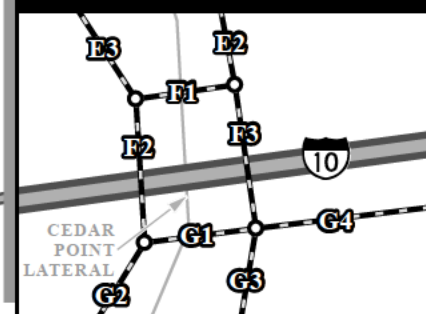
Enclosure

ONLY ONE MULTI-SEGMENT  
TRANSMISSION LINE ROUTE WILL  
ULTIMATELY BE CONSTRUCTED

CITY OF  
MONT  
BELVIEU

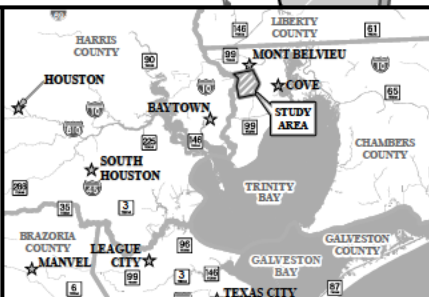


MAP INSET 1



# KILGORE SUBSTATION 138 kV TRANSMISSION LINE PROJECT

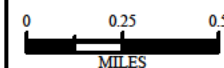
PRELIMINARY ALTERNATIVE  
TRANSMISSION LINE SEGMENTS



## LEGEND

- STUDY AREA
- PRELIMINARY ALTERNATIVE END POINT
- PRELIMINARY ALTERNATIVE ORIGIN POINT
- PRELIMINARY ALTERNATIVE ROUTE SEGMENT
- COUNTY BOUNDARY
- CITY LIMITS

- EXISTING TRANSMISSION LINE
- MINOR ROADWAY
- MAJOR ROADWAY
- RAILROAD
- MINOR STREAM
- NAMED STREAM



## WELCOME TO CENTERPOINT ENERGY'S PUBLIC MEETING 138 kV KILGORE SUBSTATION PROJECT

October 13, 2022

Thank you for attending CenterPoint Energy's public meeting for the 138 kV Kilgore Substation Project. The purpose of the public meeting is to share information as well as gather input from the public on the yet-to-be-determined route of a proposed 138 kV transmission line in northwestern Chambers County that will improve the electric reliability of the distribution system in the Mont Belvieu-Baytown Area and serve projected load growth. The proposed construction includes a new 138 kV double-circuit transmission line between an existing CenterPoint Energy transmission line located in northwestern Chambers County to one of the three proposed Kilgore Substation sites. The information gathered will be used to help formulate alternate routes for consideration by the Public Utility Commission of Texas.

Information stations and exhibits staffed by knowledgeable CenterPoint Energy representatives and environmental specialists from Halff Associates, Inc. will be available to explain the project and answer questions. Please visit the stations that are of interest to you; they include the following:

1. **Registration and Information:** You will be asked to sign in so that we may get an accurate count of tonight's participants. You will receive an information packet about the project and a questionnaire. The questionnaire is used to help CenterPoint Energy better understand any concerns you may have regarding the project and to provide information about any special circumstances. It is important that you complete this questionnaire to ensure that your comments and concerns about the project are taken into account.
2. **Project Need:** CenterPoint Energy representatives are available to discuss the need and the schedule for the project. An electrical schematic of the transmission system in the vicinity of the project is displayed there. The Public Utility Commission of Texas certification process flowchart for new transmission lines is also located there.
3. **Right-Of-Way/Construction:** Photographs and drawings of typical transmission structures for the proposed project are available for viewing. A right-of-way agent is on hand to answer questions about the land requirements for the project and the process used when necessary to obtain easements across private property. In addition, transmission experts will address design and construction questions, including construction methods and materials.
4. **EMF Information:** Information regarding electric and magnetic fields (EMF) is available at this station from a CenterPoint Energy representative familiar with EMF issues.
5. **Routing/Environmental:** Evaluation criteria to be used in routing the transmission line as well as the governmental agencies and organizations that have already been contacted about this project are listed. Aerial photographic maps are available that depict the existing CenterPoint Energy transmission lines, pipelines, roadways, and property lines along with the proposed preliminary transmission line segments. Maps depicting known constraint areas are also available for viewing. Environmental specialists from Halff Associates, Inc. will address routing and environmental questions.
6. **GIS Computer Stations:** Geographic Information System (GIS) computer stations with expert operators from Halff Associates, Inc. are available to display and print specific land parcels and area properties in relation to the proposed preliminary transmission line segments.
7. **Refreshments:** Snacks and drinks are available while completing the questionnaire.
8. **Questionnaire Drop Off:** Please drop off the completed questionnaire at the registration table as you leave the public meeting. If you need to take it with you to complete later, please mail or email it within 5 days to:

Wes Padgett, Kilgore Substation CCN Project Manager  
CenterPoint Energy, CNP-T 14<sup>th</sup> Floor  
P.O. Box 1700  
Houston, TX 77251-1700  
Phone: 713-207-6490, Email: [kilgoresubstation@centerpointenergy.com](mailto:kilgoresubstation@centerpointenergy.com)  
Website: <http://www.centerpointenergy.com/kilgoresubstation>

## **FAQ's for 138 kV Kilgore Substation Project**

### **Who is CenterPoint Energy Houston Electric, LLC?**

CenterPoint Energy Houston Electric, LLC (CenterPoint Energy or the Company) maintains the wires, towers, poles, and electric infrastructure serving more than two million end-use customers in a 5,000-square-mile electric service territory in the Houston metropolitan area. While the Company's employees ensure the reliable delivery of electricity from power plants to homes and businesses, the Company neither generates nor sells it to customers. The Company is an indirect, wholly-owned subsidiary of CenterPoint Energy, Inc.

Headquartered in Houston, Texas, CenterPoint Energy, Inc. is a domestic energy delivery company that includes electric transmission & distribution, natural gas distribution and energy services operations. The company serves nearly seven million metered customers primarily in Indiana, Louisiana, Minnesota, Mississippi, Ohio, and Texas. With more than 9,600 employees, CenterPoint Energy, Inc. and its predecessor companies have been in business for more than 140 years.

### **What is the Public Utility Commission of Texas (PUC)?**

The PUC is the state agency created by the Texas Legislature to regulate the rates and services of electric, telecommunication and water utilities throughout the state.

### **What is the Electric Reliability Council of Texas (ERCOT)?**

ERCOT manages the flow of electric power to 26 million Texas customers, representing 90 percent of the state's electric load. CenterPoint Energy's service territory is located within the footprint of ERCOT. As the independent system operator for the region, ERCOT oversees activities related to the reliable and safe transmission of electricity by scheduling power on an electric grid that connects more than 52,700 miles of transmission lines and more than 1,030 generation units. ERCOT is a membership-based nonprofit corporation, governed by a board of directors and subject to oversight by the PUC and the Texas Legislature. ERCOT's members include consumers, cooperatives, generators, power marketers, retail electric providers, investor-owned electric utilities (transmission and distribution providers including CenterPoint Energy), and municipally-owned electric utilities.

### **What are transmission lines?**

Transmission lines are a part of the interconnected power system that moves electricity from generators to substations, where the electricity is reduced in voltage and then delivered to end-use consumers over the distribution system that connects to businesses and homes. Transmission lines are larger, operate at higher voltages, and typically convey electricity over



longer distances. Distribution lines are smaller, operate at lower voltages, and convey electricity over shorter distances within cities and neighborhoods.

### **What is the 138 kV Kilgore Substation Project?**

The 138 kV Kilgore Substation Project is a 138 kV double circuit electric transmission line proposed to be built by CenterPoint Energy between an existing CenterPoint Energy transmission line located in northwestern Chambers County to one of three proposed Kilgore Substation sites. The need for and route of the project is subject to approval by the PUC.

### **Where will the 138 kV Kilgore Substation be located?**

The Kilgore Substation is proposed to be located near Kilgore Parkway and the Grand Parkway in northwestern Chambers County. There are three sites under consideration. The PUC will ultimately determine the route of the transmission line and the related substation location.

### **Why is the 138 kV Kilgore Substation Project needed?**

The 138 kV Kilgore Substation is needed to meet the growing demand for electricity in the Baytown and Mont Belvieu area. The area has had substantial growth in industrial facilities, commercial and residential electrical load.

### **What is the process for the approval of the 138 kV Kilgore Substation transmission line?**

CenterPoint Energy will gather input from the community through a public meeting process and other sources for the preparation of a routing study and environmental assessment between CenterPoint's existing transmission line and the three proposed substation sites in Chambers County. After that information is gathered and the public meeting process is concluded, CenterPoint Energy will prepare and file an Application for a Certificate of Convenience & Necessity (CCN) for a Proposed Transmission Line with the PUC. The application will include multiple routing alternatives for the proposed transmission line between the existing transmission line and the proposed substation sites. The PUC will decide whether the application should be approved and, if approved, which route and substation site will be approved.

### **What are the considerations involved in selecting a route for the transmission line?**

The PUC considers many factors in deciding whether to approve a proposed transmission line as prescribed by state law and PUC rules, including community values, recreational and park areas, historic and aesthetic values, and environmental integrity. They also consider specific routing criteria for new transmission lines, including whether the route utilizes or parallels compatible rights-of-way such as existing electrical facilities, roads, highways, railroads, telephone lines,



property lines, natural features, and cultural features. CenterPoint Energy will provide information about these factors for each of the proposed alternative routes in its CCN application.

### **What type of structures will be used on the new transmission line?**

The typical structures for the proposed alternative route segments may be double-circuit lattice steel towers, double-circuit steel poles, or double-circuit concrete poles with a vertical phase configuration in an 80-foot wide right-of-way (ROW). Depending on the terrain and other considerations, such as the length of span between structures and clearance requirements needed to cross rivers, wetland areas, Federal Aviation Administration determinations or utility and roadway crossings, CenterPoint Energy may require wider ROW widths and may vary structure types and heights.

### **Will CenterPoint Energy hold Public Meetings?**

Yes. Consistent with PUC rules and prior to filing a CCN application, CenterPoint Energy will hold a public meeting for the project to address concerns or questions from landowners and other interested parties. CenterPoint Energy will share information about routing alternatives and gather input from the public. Individuals attending the public meeting will have an opportunity to make comments, ask questions, and express any concerns that they might have about the routes under consideration. Representatives from CenterPoint Energy and Halff Associates will be present at the public meeting. The public meeting will be held on **Thursday October 13, 2022, from 5:00 p.m. to 8:00 p.m. at the Baytown Community Center at 2407 Market Street, Baytown, TX 77520.**

### **How will CenterPoint Energy compensate landowners if it is necessary for the transmission line to cross their property?**

Once the PUC has approved a route for the project, CenterPoint Energy will make a bona fide offer to the landowner when purchasing right-of-way following the requirements of Texas law and will provide landowners with a copy of the State of Texas Landowner's Bill of Rights. In cases where the parties do not agree on the value of the property, the land value will be determined in a condemnation proceeding where special commissioners, appointed by a judge, will determine the value of the property following a hearing where all interested parties are entitled to provide evidence of valuation.

*This page left blank intentionally*

# Public Utility Commission

## Certification Process for Transmission Lines

### Define Project

- Identify beginning and end points for project  
(Existing 138 kV Corridor and an Alternate Substation Site)

### Environmental Assessment And Routing Analysis

- Identify study area based on project definition.
- Gather data about study area.
- Map environmental and land use constraints in study area.
- Determine preliminary transmission line segments and alternate substation sites based on maps, aerial photos, constraints data, and field visits.
- Hold open house to gather public input.
- Analyze preliminary transmission line segments and alternate substation sites to develop the alternative routes.

YOU  
ARE  
HERE

### PUC Application Process

- Submit an application to the PUC to amend CenterPoint Energy's Certificate of Convenience and Necessity (CCN).
- Upon filing of the application, notices will be sent to landowners whose property may be crossed or is within 300 feet of any alternative route.
- Notices also will be sent to municipalities and electric utilities that are within five miles of the project and to municipal and county governments where the project is located.
- Following the filing of the application, there will be an intervention opportunity for interested parties.
- Approval of a CCN application gives CenterPoint Energy the authorization to build the new transmission project along the route approved by the PUC.

#### PUC Staff Review

PUC staff conducts review and makes recommendation to approve project as submitted or approve with modifications.

NO

#### Intervention?

YES

#### Administrative Hearing

- Technical review of project routing
- Testimony filed by all parties
- Administrative hearing
- Administrative Law Judge prepares proposed final order

Within 12 months after  
application is submitted.

#### PUC Makes Decision

- Approve application
- Approve application with modifications
- Deny

# 138 kV Kilgore Substation Project

## Anticipated Project Schedule

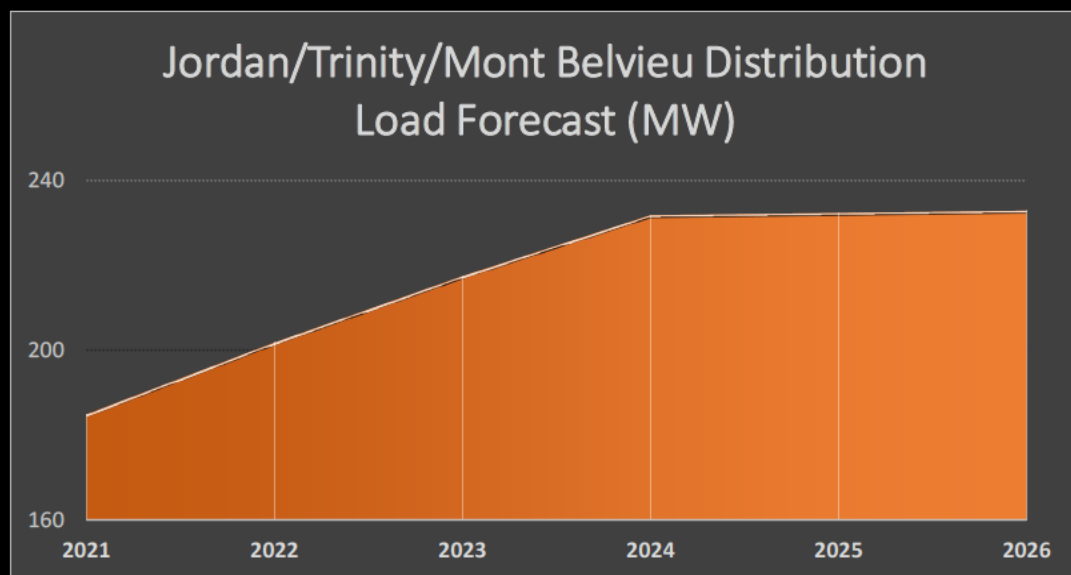
| Transmission Line Project Phases                             | Duration    | Start         | Finish        |
|--|-------------|---------------|---------------|
| Routing Study, Environmental Assessment, and Public Meetings | In Progress | June 2022     | October 2022  |
| CCN Application Preparation/Filing                           | 4 months    | October 2022  | February 2023 |
| PUC Approval   | 12 months   | February 2023 | February 2024 |
| ROW Activities   | 8 months    | February 2024 | October 2024  |
| Transmission Construction                                    | 12 Months   | May 2024      | May 2025      |

### Acronyms

|            |  |
|------------|--|
| <b>CCN</b> | Certificate of Convenience and Necessity |
| <b>PUC</b> | Public Utility Commission of Texas       |
| <b>ROW</b> | Right-of-Way                             |

# Project Need-Transmission

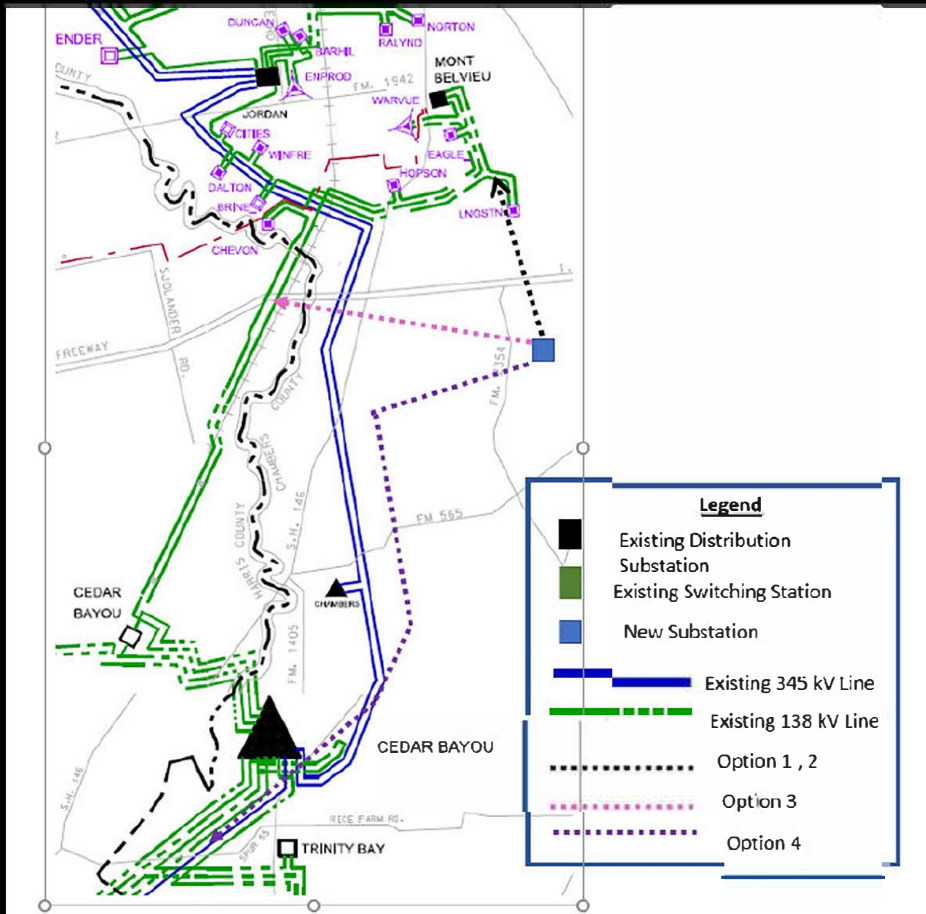
## Kilgore Distribution Substation



- ❖ **Serve new load in the Jordan/Trinity/Mont Belvieu area.** The Northeastern part of CenterPoint Energy's service territory is a highly industrialized area with several chemical facilities, which is also experiencing a significant distribution load increase with multiple commercial and residential developments. It is forecasted to have an approximate 25% load growth between 2021 and 2026. The new Kilgore Distribution substation will supply part of this increase in distribution load.
- ❖ **Relieve capacity limitations of the existing distribution substations.**
- ❖ **Increase reliability in the Jordan/Trinity/Mont Belvieu area..**
- ❖ **Support future load growth.**

# Project Need-Transmission

## Kilgore Distribution Substation

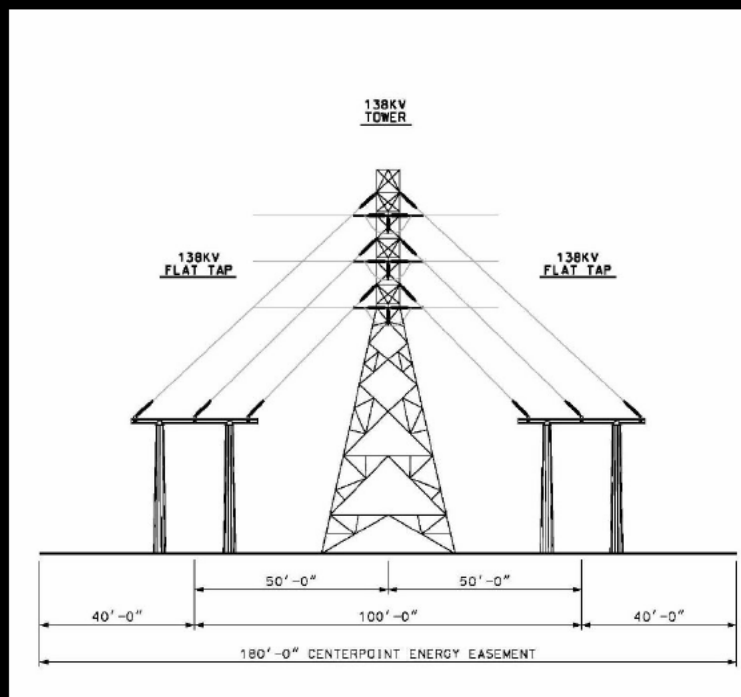


- ❖ CenterPoint Energy studied 4 different transmission options to supply power to the Kilgore Substation.
- ❖ CenterPoint Energy concluded that a double-tap to the new Kilgore 138/35 kV substation via an approximately 3 mi long 138 kV double circuit line to ckt 52 EAGLE - WINFRE and ckt 86 LNGSTN to Mont Belvieu was the best option.
- ❖ The project will improve the reliability and load serving capabilities of the region

# Typical 138 kV Construction

## Steel Flat-Tap

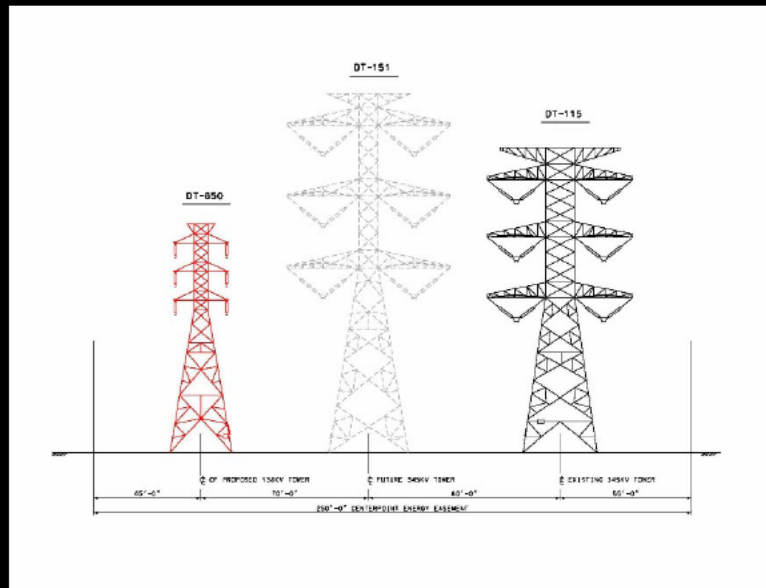
### 80' Wide Right-of-Way





# Existing Right-of-Way

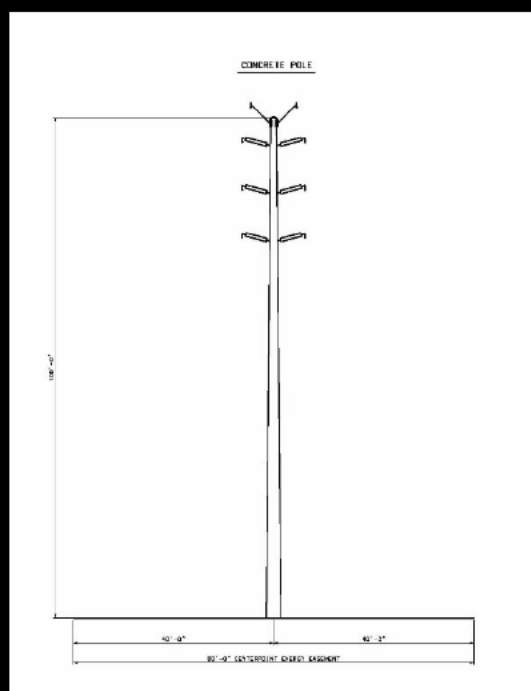
## *Lattice Tower Option*



# Typical 138 kV Construction

## Double-Circuit Concrete Pole

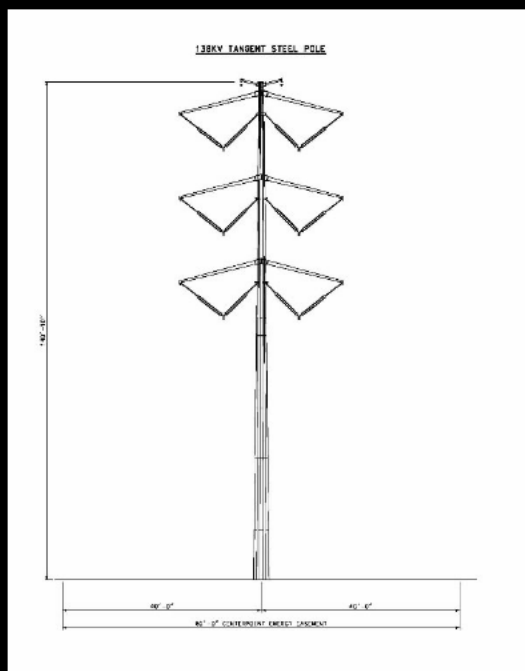
### 80' Wide Right-of-Way



# Typical 138 kV Construction

## Double-Circuit Steel Pole

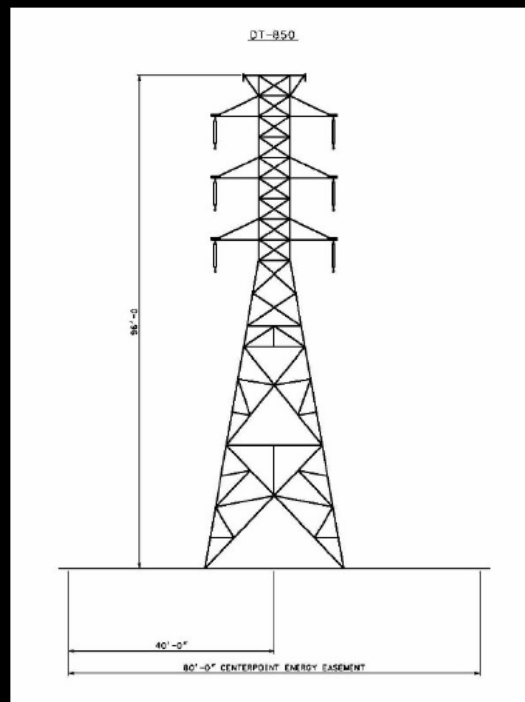
### 80' Wide Right-of-Way



# Typical 138 kV Construction

## Double-Circuit Steel Towers

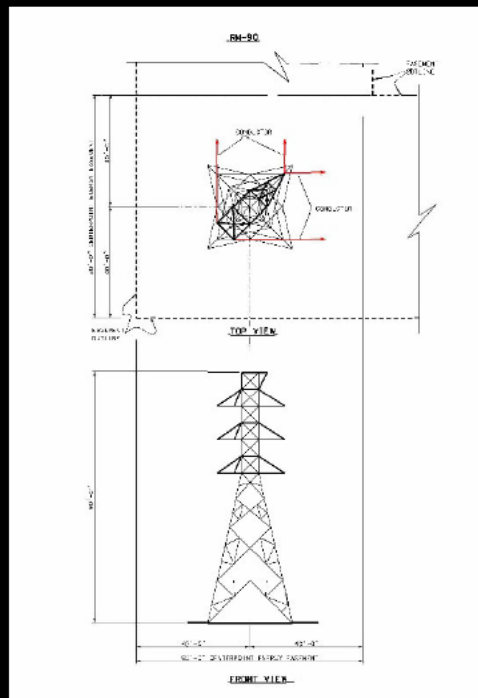
### 80' Wide Right-of-Way



# Typical 138 kV Construction

## Double-Circuit Turning Structure

### 80' Wide Right-of-Way



**138 kV KILGORE SUBSTATION PROJECT**  
**PUBLIC MEETING QUESTIONNAIRE**  
**October 13, 2022**

1. How did you learn about this public meeting?

\_\_\_\_\_ Newspaper Notice    \_\_\_\_\_ Invitation Letter    \_\_\_\_\_ Other (please specify) \_\_\_\_\_

\_\_\_\_\_

2. In your opinion, has the need for the project been adequately explained to you?

Yes \_\_\_\_\_ No \_\_\_\_\_ If no, please explain: \_\_\_\_\_

\_\_\_\_\_

\_\_\_\_\_

3. Please rank from 1 to 11 the following land uses that you believe should be considered of greatest concern (avoided if possible) to least concern in routing the transmission line. Please use each number only once. (1 = greatest concern; 11 = least concern)

|   |                                    |
|---|------------------------------------|
| _____ Agricultural land                 | _____ Schools                      |
| _____ Floodplains or wetlands           | _____ Churches                     |
| _____ Recreational or park areas        | _____ Cemeteries                   |
| _____ Residential areas or subdivisions | _____ Historic Sites               |
| _____ Commercial areas                  | _____ Wildlife                     |
|   | _____ Other (please specify) _____ |

\_\_\_\_\_

\_\_\_\_\_

4. Please rank from 1 to 7 the following linear features that you believe should be considered of greatest importance to least importance for the transmission line route to follow. Please use each number only once. (1 = most important; 7 = least important)

|  |   |
|--|---|
| _____ Roads/Highways                       | _____ Electrical lines                  |
| _____ Telephone lines                      | _____ Railroads                         |
| _____ Property lines                       | _____ Natural features (e.g. waterways) |
| _____ Cultural features (e.g. fence lines) | _____ Other (please specify) _____      |

\_\_\_\_\_

5. In your opinion, are there any other factors or features that should be considered in determining the routing of the proposed transmission line?

Yes \_\_\_\_\_ No \_\_\_\_\_

If yes, please list them below and briefly explain why they are important to you.

\_\_\_\_\_

\_\_\_\_\_

\_\_\_\_\_

\_\_\_\_\_

(over)

6. The following features are noted on the Constraints Map at the Routing/Environmental station:

- Churches, schools, nursing homes, hospitals, and cemeteries
- Commercial AM and FM radio transmitters, microwave relay stations, or other similar electronic installations
- Airports and landing strips
- Pastures or cropland irrigated by traveling irrigation systems
- Parks and recreational areas
- Historical and archaeological sites
- Environmentally sensitive areas
- Floodplain and floodway boundaries

Are any of these features incorrectly shown on the map or are you aware of any additional features that were not included?

Yes \_\_\_\_\_ No \_\_\_\_\_

If yes, did you speak with a representative and indicate the corrections needed to the map?

Yes \_\_\_\_\_ No \_\_\_\_\_

If you were not able to speak to a representative, please identify the approximate location of any missing or incorrectly located features on the Constraints Map by describing the feature and location below.

This image shows a blank sheet of white paper with horizontal ruling lines. The lines are evenly spaced and extend across the width of the page. There are no margins, text, or other markings on the paper.



7. If you have a concern with a particular preliminary transmission line segment(s) shown on the exhibits or the attached map, please indicate the segment letter and describe your concern.

---

---

---

---

---

---

8. Do you have a preference on the type of transmission structures being proposed?

Yes \_\_\_\_\_ No \_\_\_\_\_

If so, please explain the type of transmission structures you prefer and why?

---

---

---

---

9. Which of the following applies to you? Please check all that apply and include the relevant segment(s) letters. (See attached map.)

\_\_\_\_\_ A preliminary transmission line segment is near my home.  
Applicable Segment(s) \_\_\_\_\_

\_\_\_\_\_ A preliminary transmission line segment is near my business.  
Applicable Segment(s) \_\_\_\_\_

\_\_\_\_\_ A preliminary transmission line segment is on my land .  
Applicable Segment(s) \_\_\_\_\_

\_\_\_\_\_ None of the above

\_\_\_\_\_ Other (please specify) \_\_\_\_\_  
\_\_\_\_\_  
\_\_\_\_\_  
\_\_\_\_\_  
\_\_\_\_\_  
\_\_\_\_\_  
\_\_\_\_\_  
\_\_\_\_\_  
\_\_\_\_\_

(over)

10. Did the information provided and exhibits displayed at the public meeting meet your needs?  
Yes \_\_\_\_\_ No \_\_\_\_\_ If no, please explain: \_\_\_\_\_  
\_\_\_\_\_  
\_\_\_\_\_
11. Have you visited the 138 kV Kilgore Substation Project website  
([www.centerpointenergy.com/kilgoresubstation](http://www.centerpointenergy.com/kilgoresubstation)) to view information about the project?  
Yes \_\_\_\_\_ No \_\_\_\_\_
12. **Your name and contact information are optional, unless** you have a question that you would like for us to answer.  
Name \_\_\_\_\_
- ☐ Do Not Contact Me      ☐ Contact me regarding the following question (please specify)  
\_\_\_\_\_  
\_\_\_\_\_  
\_\_\_\_\_  
\_\_\_\_\_
- I prefer to be contacted by: (choose all that apply)**
- ☐ U.S. Mail    Address \_\_\_\_\_  
City \_\_\_\_\_ State \_\_\_\_\_ Zip \_\_\_\_\_
- ☐ Telephone (home) \_\_\_\_\_ (work) \_\_\_\_\_ (cell) \_\_\_\_\_
- ☐ Email Address \_\_\_\_\_
13. Additional comments (please specify): \_\_\_\_\_  
\_\_\_\_\_  
\_\_\_\_\_  
\_\_\_\_\_  
\_\_\_\_\_

THANK YOU FOR COMPLETING THE QUESTIONNAIRE. WE APPRECIATE YOUR INPUT.

Please drop off your completed questionnaire at the registration table as you leave the public meeting. If you need to take it with you to complete later, please mail or email it within 5 days to:

Wes Padgett, Kilgore Substation CCN Project Manager  
CenterPoint Energy  
Policy & Compliance, CNP-T 14<sup>th</sup> Floor  
P.O. Box 1700  
Houston, TX 77251-1700  
Phone: (713) 207-6490  
Email: [kilgoresubstation@centerpointenergy.com](mailto:kilgoresubstation@centerpointenergy.com)