



Hockley Open House

April 11, 2026



Strengthening Resiliency for Hockley

Our Greater Houston Resiliency Initiative includes a series of actions to strengthen our ability to withstand extreme weather impacts.



Avoiding 19 million
outage minutes per year during a Beryl-like storm

Resiliency Actions



Installing stronger, more storm-resilient poles



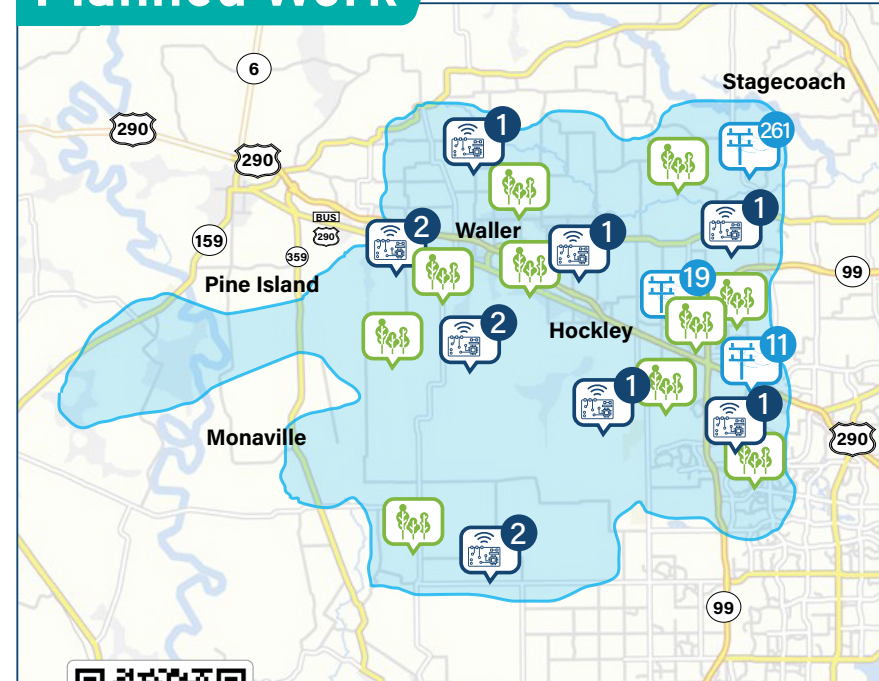
Installing automation devices capable of self-healing



Clearing high-risk vegetation near power lines

Resiliency Actions	Complete As of Dec. 2025	Planned 2026 - 2028
Installing stronger, more storm-resilient poles	2,849 POLES	291 POLES
Installing automation devices capable of self-healing	11 DEVICES	11 DEVICES
Clearing high-risk vegetation near power lines	~412 MILES	~412 MILES

Planned Work



Scan the QR code or visit [CenterPointEnergy.com/TakingAction](https://www.CenterPointEnergy.com/TakingAction) to learn more.

Improving Reliability and Modernizing the Grid for Hockley

As of January 1, we have a series of vital electric system investments planned to improve daily reliability for the community.



Avoiding

104,000

outage minutes each
year for the Hockley
community



Undergrounding

5+

miles of electric
distribution lines



Hardening

7+

miles of transmission
infrastructure



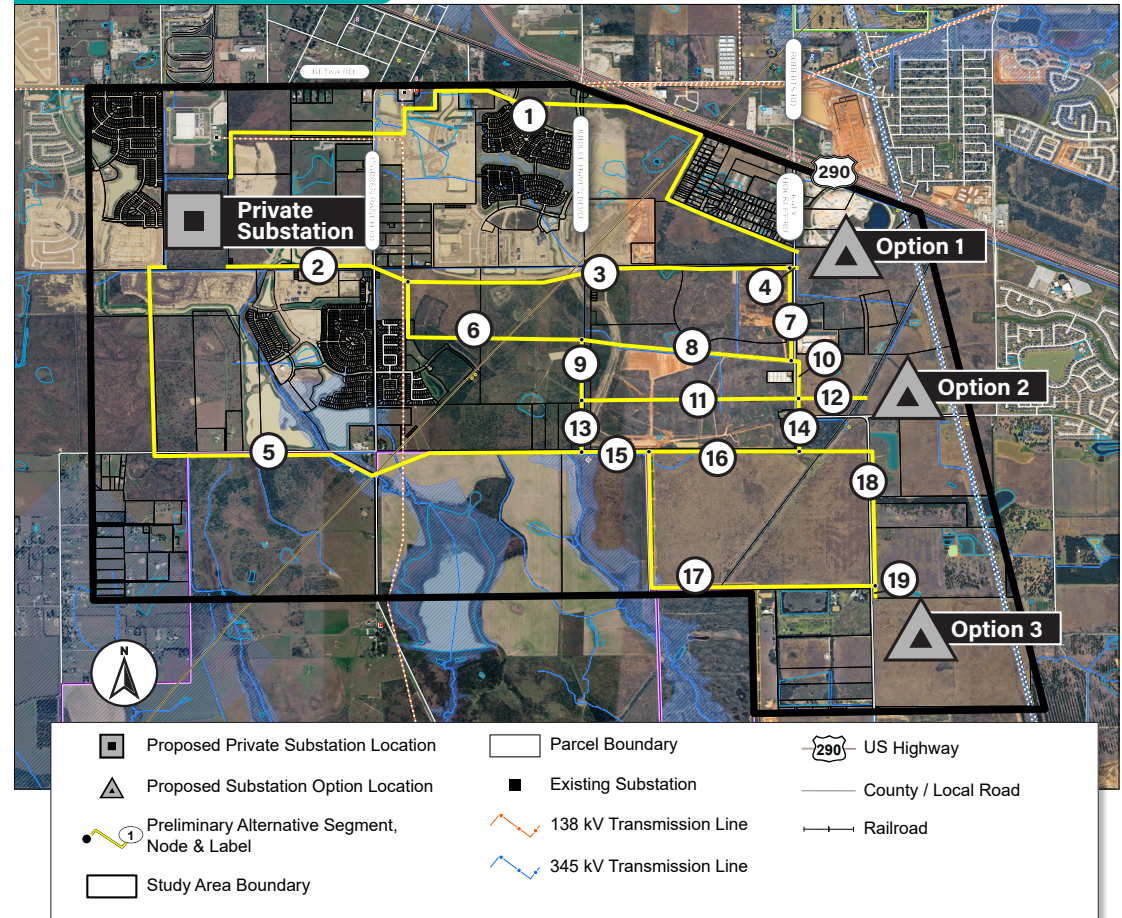
Increasing Energy Capacity for Hockley

As part of our efforts to meet future local economic growth, we are planning:

~5 miles of transmission lines

1 new substation

Overview Map



Scan the QR code to visit [CenterPointEnergy.com/HockleyTransmissionProject](https://www.CenterPointEnergy.com/HockleyTransmissionProject)



Benefits for Hockley

This local infrastructure improvement project will:



Strengthen the local electric grid to withstand up to

140mph hurricane-force winds



Provide

~\$400K

annually in property taxes, of which half will go to local schools and half to Harris County



Enable new jobs including temporary construction jobs and permanent, high-paying local jobs

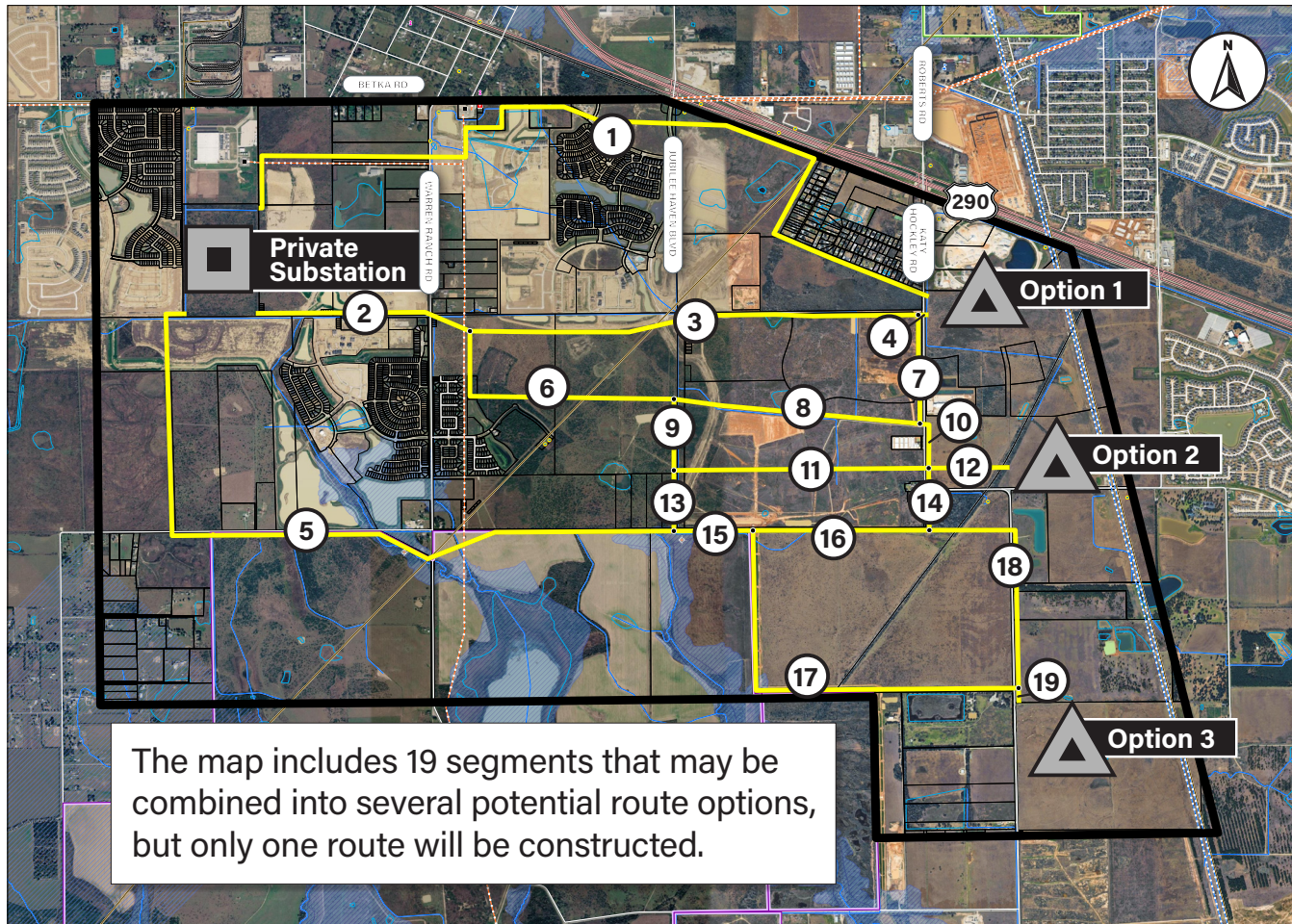


Empower the local economy by working with local vendors and small businesses to support the project

Scan the QR code to visit [CenterPointEnergy.com/HockleyTransmissionProject](https://www.CenterPointEnergy.com/HockleyTransmissionProject)



Project Overview Map



LEGEND

- Proposed Private Substation Location
- ▲ Proposed Substation Option Location
- ① Preliminary Alternative Segment, Node & Label
- ▭ Study Area Boundary
- ▭ Parcel Boundary
- Existing Substation
- 138 kV Transmission Line
- 345 kV Transmission Line
- 290 US Highway
- County / Local Road
- Railroad

Scan the QR code to visit [CenterPointEnergy.com/HockleyTransmissionProject](https://www.CenterPointEnergy.com/HockleyTransmissionProject)



Environmental Stewardship

We are committed to preserving and protecting the local environment and complying with all required permitting. As part of this project, we review:



Public and private parks and recreation areas



Soils and geology



Potential impacts to bodies of water and wetlands



Historic and archaeological sites



Wildlife, vegetation and fisheries



Existing infrastructure, such as roads, railroads and pipelines

Scan the QR code to visit [CenterPointEnergy.com/HockleyTransmissionProject](https://www.CenterPointEnergy.com/HockleyTransmissionProject)



Health and Safety Information

- The health and safety of the Hockley community is our number one priority.
- We know our customers may have questions regarding Electric and Magnetic Fields (EMF), and we are committed to working with them.
- Common sources of EMF include home and office wiring, power lines and electrical appliances.
- As part of our commitment to our customers, we offer free EMF testing at your home or business.
- For more information or to schedule an appointment, visit [CenterPointEnergy.com/EMF](https://www.CenterPointEnergy.com/EMF).



Scan the QR code to visit [CenterPointEnergy.com/EMF](https://www.CenterPointEnergy.com/EMF) to learn more



Partnering with Property Owners

We deeply respect private property owners and property rights, and we are committed to:



Take the time needed to answer your questions



Rely on independent, professional appraisals



Reach agreements through good faith negotiations and partnership

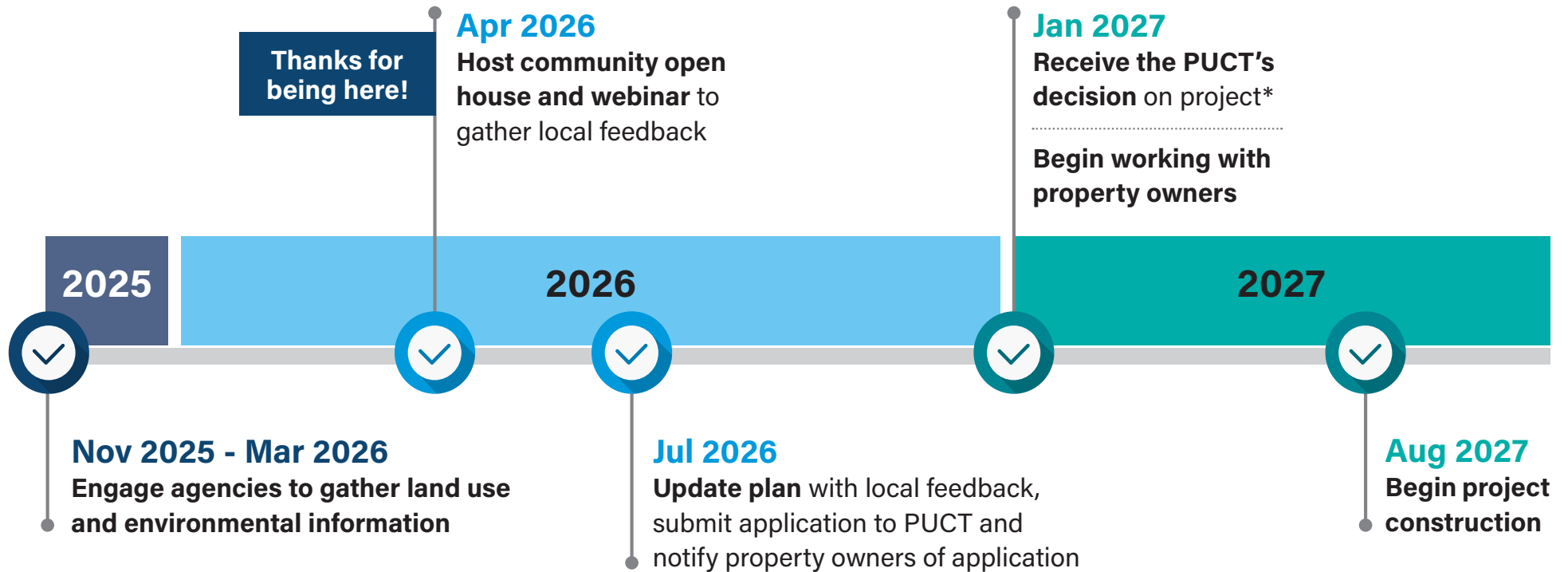


Offer payment options depending on your needs

Scan the QR code to visit [CenterPointEnergy.com/HockleyTransmissionProject](https://www.CenterPointEnergy.com/HockleyTransmissionProject)



Key Project Dates & Milestones



*Please remember: Once local feedback is gathered and analyzed over the coming months, as part of the route planning process, it is the Public Utility Commission of Texas (PUCT) that will determine the final route.

Scan the QR code to visit [CenterPointEnergy.com/HockleyTransmissionProject](https://www.CenterPointEnergy.com/HockleyTransmissionProject)



What to Expect During Construction



Pre-Construction Activities

- Building access roads
- Marking utilities and pole locations using flags and stakes
- Removing trees and vegetation, only as needed
- Utilizing safety measures, like fencing work areas

Pole & Wire Installation

- Assembling, installing and securing new poles
- Installing new wires to poles
- Conducting work with large equipment
- Utilizing safety measures, like traffic control

Energize Equipment

- Testing and energizing new equipment
- Note: We don't anticipate any impact to electric service during this process

Post-Construction & Site Restoration

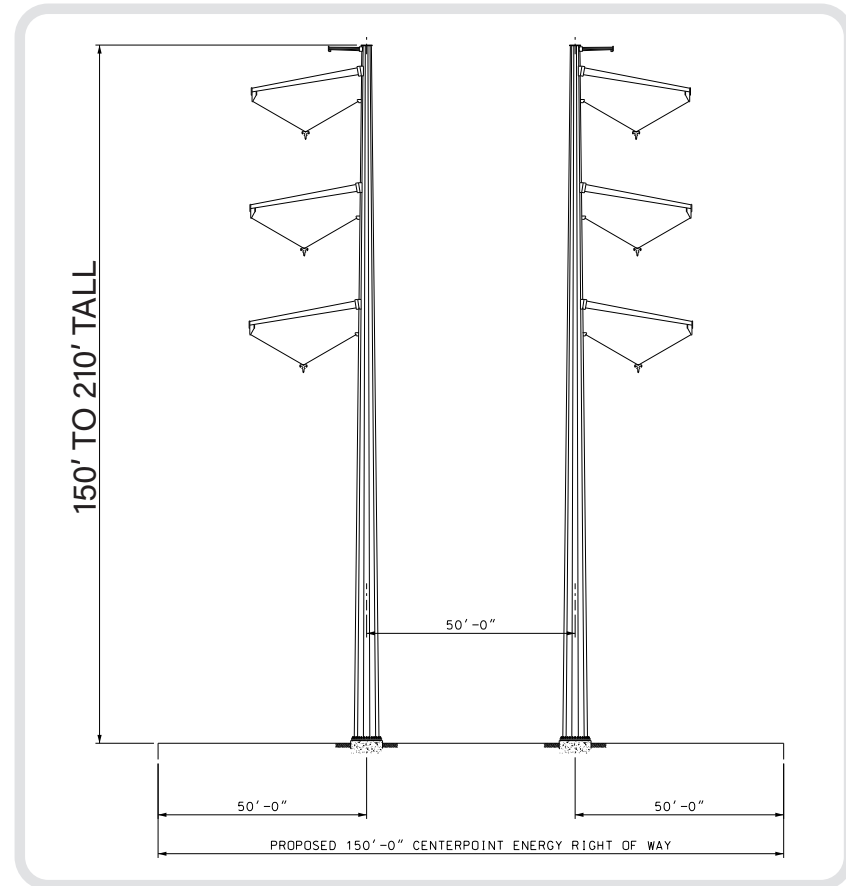
- Restoring properties to like-kind conditions or better
- Restoring public roads to meet city/county standards

Scan the QR code to visit [CenterPointEnergy.com/HockleyTransmissionProject](https://www.CenterPointEnergy.com/HockleyTransmissionProject)



Transmission Pole Design

We will be building stronger, high-voltage transmission lines and poles designed to better withstand extreme weather and hurricane-force winds up to 140 mph.



Scan the QR code to visit [CenterPointEnergy.com/HockleyTransmissionProject](https://www.CenterPointEnergy.com/HockleyTransmissionProject)



We Want Your Input

- ✔ Your feedback is an essential part of the route planning process.
- ✔ It's important to note that **no final route has been selected.**
- ✔ No final decision will be made by the Public Utility Commission of Texas without considering local public input.
- ✔ You can provide us with your input in the following ways:
in person, website, mail, phone.



Scan the QR code to visit [CenterPointEnergy.com/HockleyTransmissionProject](https://www.CenterPointEnergy.com/HockleyTransmissionProject)



Agencies Engaged

As part of our planning efforts, we are working together with the following agencies to gather their local intel and feedback on this project:

Federal

- Federal Aviation Administration
- Federal Emergency Management Agency
- National Park Service
- Natural Resources Conservation Service
- Military Aviation and Installation Assurance Siting Clearinghouse
- U.S. Army Corps of Engineers
- U.S. Environmental Protection Agency
- U.S. Fish & Wildlife Service

State

- Railroad Commission of Texas
- Texas Commission on Environmental Quality
- Texas Department of Transportation
 - » Aviation Division
 - » District Engineer
 - » Environmental Affairs Division
 - » Planning and Programming
- Texas General Land Office
- Texas Historical Commission
- Texas Parks & Wildlife Department
- Texas Water Development Board

Local

- County Officials (Harris)
- School ISDs (Waller)
- Harris County Historical Commission
- Houston-Galveston Area Council
- Bayou Land Conservancy
- Coastal Prairie Conservancy
- Gulf Coast Bird Observatory
- Texas Agricultural Land Trust
- Texas Land Conservancy
- Texas Land Trust Council
- The Nature Conservancy

Scan the QR code to visit [CenterPointEnergy.com/HockleyTransmissionProject](https://www.CenterPointEnergy.com/HockleyTransmissionProject)

