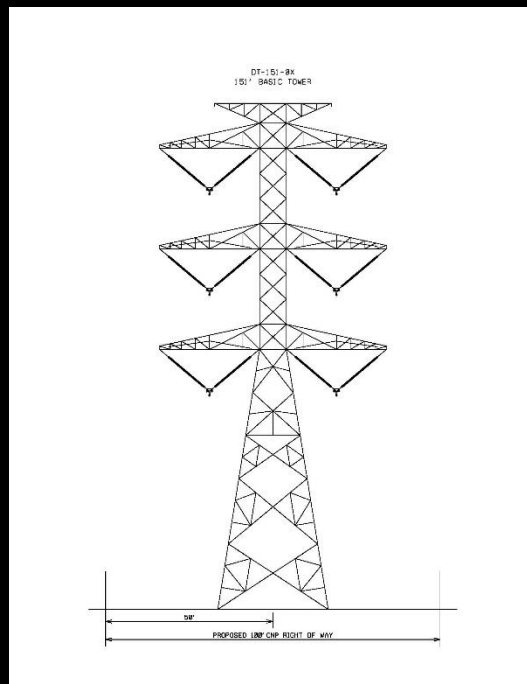


Typical 345 kV Construction Double-Circuit Steel Towers-Vertical 100' Wide Right-of-Way

*ROW width may vary according to span length

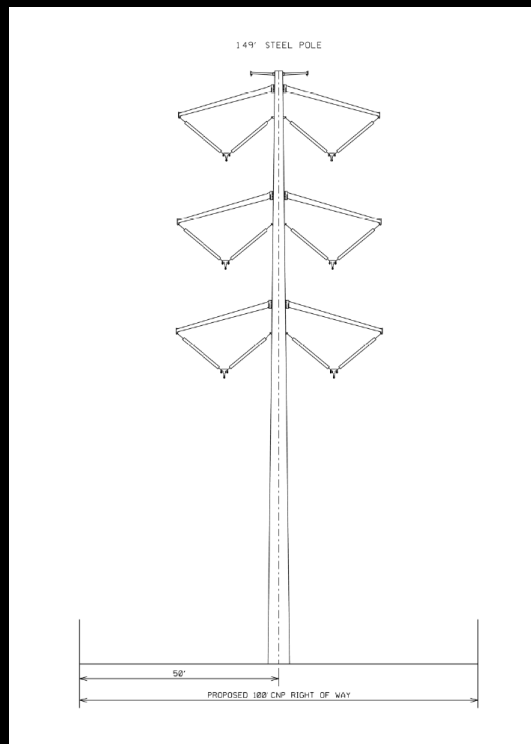
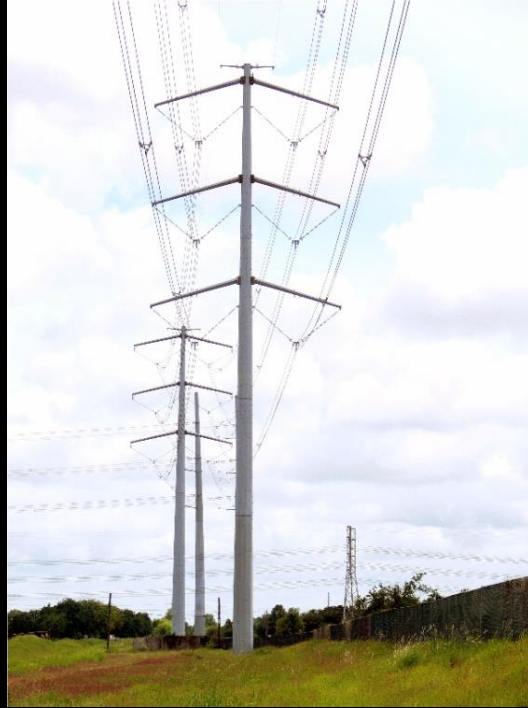


Typical 345 kV Construction

Double-Circuit Steel Poles

100' Wide Right-of-Way

*ROW width may vary according to span length



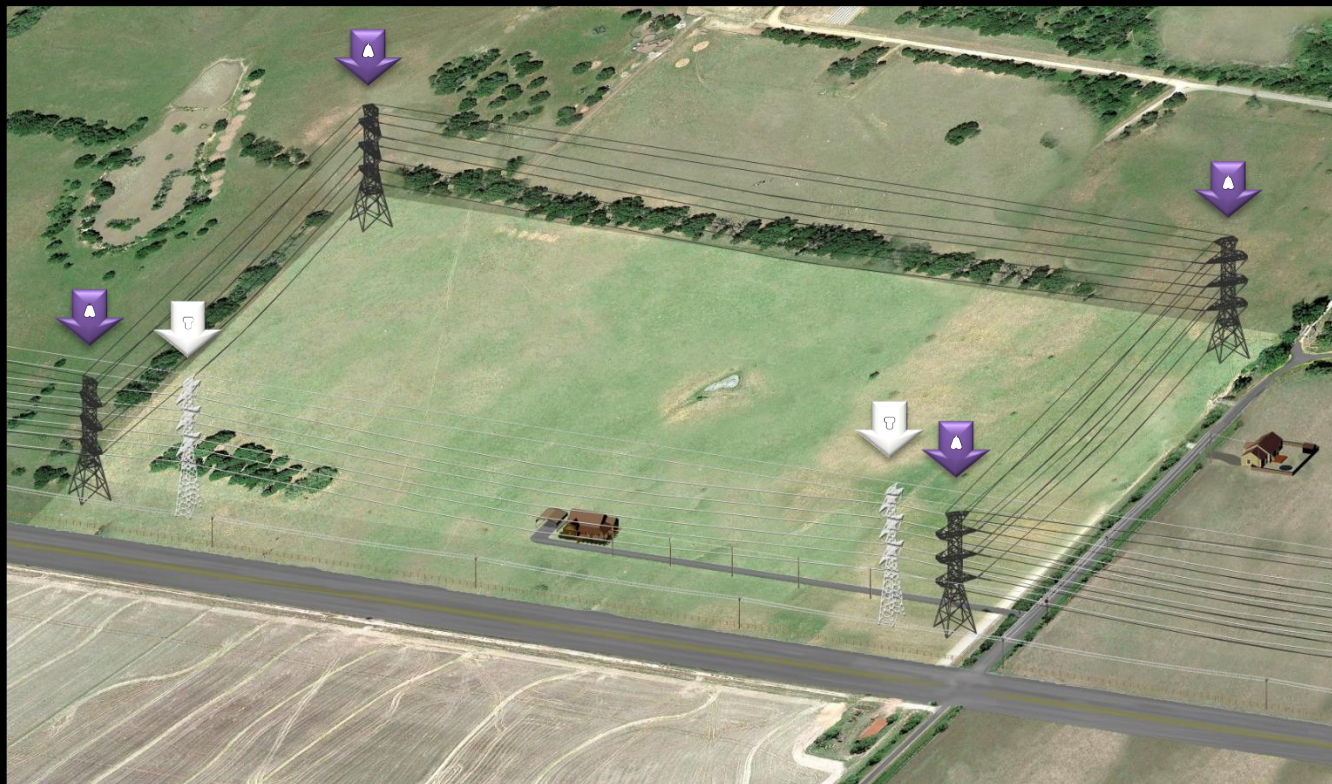
Typical 345 kV Steel Tower Angle Structure



Typical 345 kV Steel Pole Angle Structure



EXAMPLE: TRANSMISSION STRUCTURE REQUIREMENTS ROUTING ALONG ROADWAY VS. REAR PROPERTY LINES



EXAMPLE: TRANSMISSION STRUCTURE REQUIREMENTS ROUTING ALONG ROADWAY VS. REAR PROPERTY LINES

