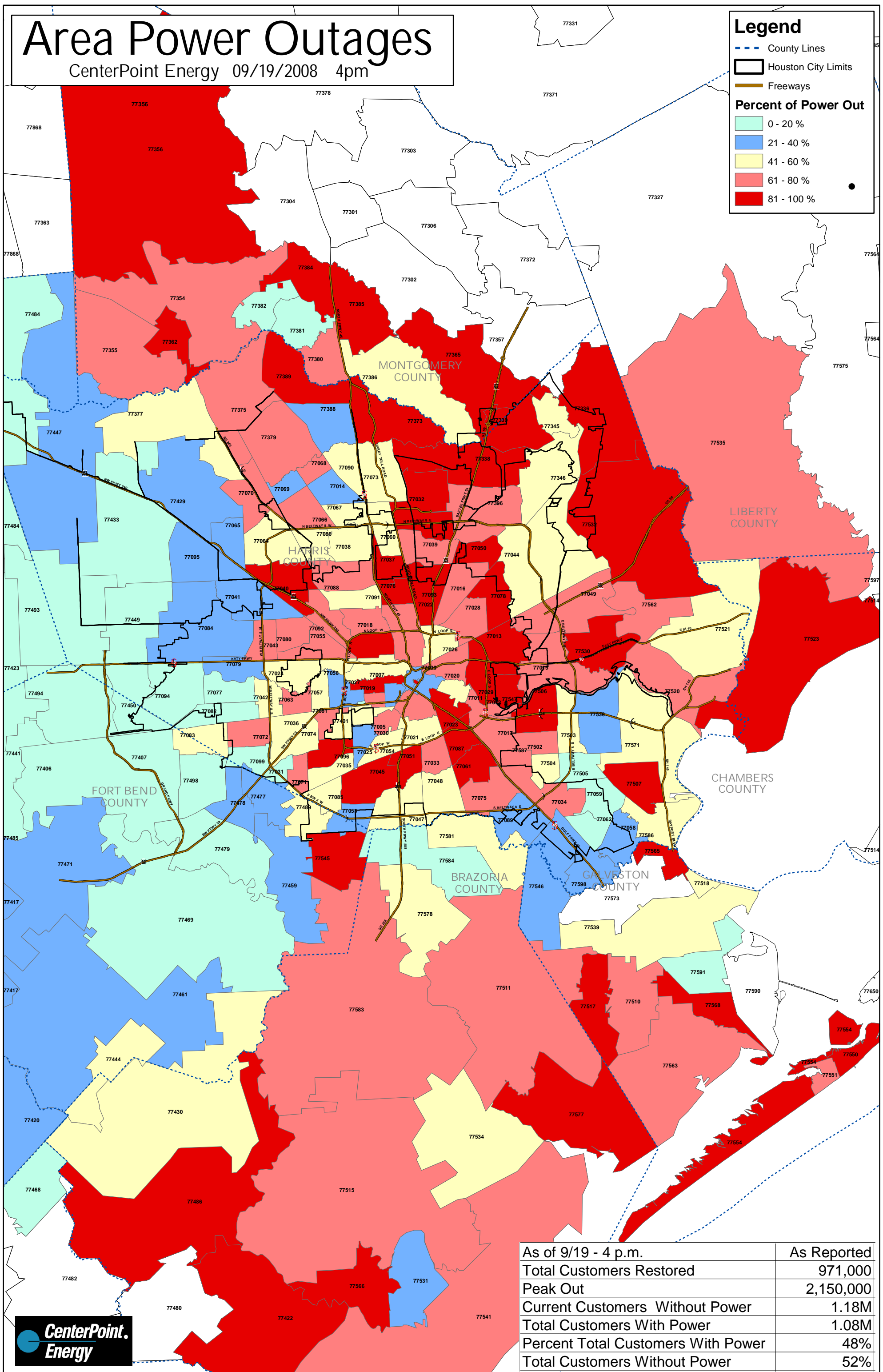


Area Power Outages

CenterPoint Energy 09/19/2008 4pm

Legend

- County Lines
 - Houston City Limits
 - Freeways
- Percent of Power Out**
- 0 - 20 %
 - 21 - 40 %
 - 41 - 60 %
 - 61 - 80 %
 - 81 - 100 %



As of 9/19 - 4 p.m.	As Reported
Total Customers Restored	971,000
Peak Out	2,150,000
Current Customers Without Power	1.18M
Total Customers With Power	1.08M
Percent Total Customers With Power	48%
Total Customers Without Power	52%

